

For Research Use Only

# Inhibin beta A-Specific Polyclonal antibody

Catalog Number: 17524-1-AP



## Basic Information

### Catalog Number:

17524-1-AP

### Size:

150ul , Concentration: 400 ug/ml by Nanodrop;

### Source:

Rabbit

### Isotype:

IgG

### GenBank Accession Number:

NM\_002192

### GeneID (NCBI):

3624

### UNIPROT ID:

P08476

### Full Name:

inhibin, beta A

### Calculated MW:

47 kDa

### Observed MW:

47 kDa

### Purification Method:

Antigen affinity purification

### Recommended Dilutions:

WB 1:500-1:1000

IP 0.5-4.0 ug for 1.0-3.0 mg of total protein lysate

## Applications

### Tested Applications:

WB, IP, ELISA

### Species Specificity:

human, mouse, rat

### Positive Controls:

WB : mouse brain tissue, PC-3 cells, rat brain tissue

IP : rat brain tissue,

## Background Information

Inhibin  $\beta$ A (INHBA) is a ligand in the transforming growth factor  $\beta$  (TGF- $\beta$ ) superfamily. Inhibin  $\beta$ A forms a disulfide-linked homo-dimer known as activin A, which has been implicated in multiple biologic processes, including neoplastic progression. The inhibin  $\beta$ A can also bind the  $\beta$ B and  $\alpha$  isoforms to form activin AB and inhibin, respectively.

## Storage

### Storage:

Store at -20°C. Stable for one year after shipment.

### Storage Buffer:

PBS with 0.02% sodium azide and 50% glycerol pH 7.3.

Aliquoting is unnecessary for -20°C storage

\*\*\* 20ul sizes contain 0.1% BSA

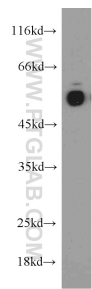
For technical support and original validation data for this product please contact:

T: 1 (888) 4PTGLAB (1-888-478-4522) (toll free in USA), or 1(312) 455-8498 (outside USA)

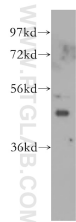
E: [proteintech@ptglab.com](mailto:proteintech@ptglab.com)  
W: [ptglab.com](http://ptglab.com)

This product is exclusively available under Proteintech Group brand and is not available to purchase from any other manufacturer.

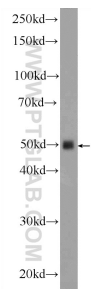
Selected Validation Data



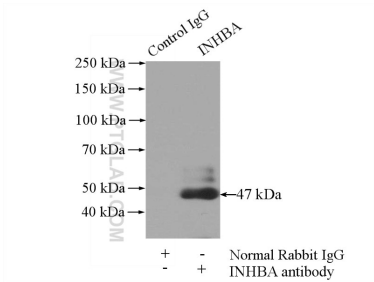
rat brain tissue were subjected to SDS PAGE followed by western blot with 17524-1-AP (Inhibin beta A-Specific antibody) at dilution of 1:300 incubated at room temperature for 1.5 hours.



PC-3 cells were subjected to SDS PAGE followed by western blot with 17524-1-AP (Inhibin beta A-Specific antibody) at dilution of 1:300 incubated at room temperature for 1.5 hours.



mouse brain tissue were subjected to SDS PAGE followed by western blot with 17524-1-AP (Inhibin beta A-Specific antibody) at dilution of 1:600 incubated at room temperature for 1.5 hours.



IP result of anti-Inhibin beta A-Specific (IP:17524-1-AP, 4ug; Detection:17524-1-AP 1:500) with rat brain tissue lysate 4000ug.