

For Research Use Only

RNASEH2B Polyclonal antibody

Catalog Number: 17527-1-AP

Featured Product

2 Publications



Basic Information

Catalog Number:

17527-1-AP

Size:

150ul, Concentration: 253 ug/ml by Bradford method using BSA as the standard;

Source:

Rabbit

Isotype:

IgG

Immunogen Catalog Number:

AG11189

GenBank Accession Number:

BC036744

GeneID (NCBI):

79621

UNIPROT ID:

Q5TBB1

Full Name:

ribonuclease H2, subunit B

Calculated MW:

331 aa, 37 kDa

Observed MW:

35 kDa

Purification Method:

Antigen affinity purification

Recommended Dilutions:

WB 1:500-1:1000

Applications

Tested Applications:

WB, ELISA

Cited Applications:

WB

Species Specificity:

human, mouse, rat

Cited Species:

human, rat

Positive Controls:

WB: mouse thymus tissue, HeLa cells, MCF-7 cells, mouse lung tissue

Background Information

Ribonuclease H2 is the major nuclear enzyme degrading cellular RNA/DNA hybrids in eukaryotes and the sole nuclease known to be able to hydrolyze ribonucleotides misincorporated during genomic replication. RNASEH2B and RNASEH2C are the non-catalytic subunits of RNase H2 complex. Defects in RNASEH2B are a cause of Aicardi-Goutieres syndrome type 2 (AGS2), a genetically heterogeneous disease with clinical features as thrombocytopenia, hepatosplenomegaly and elevated hepatic transaminases along with intermittent fever may erroneously suggest an infective process.

Notable Publications

Author	Pubmed ID	Journal	Application
Shuo Cong	33691721	Nutr Metab (Lond)	WB
Yan Li	38329876	Cell Rep	WB

Storage

Storage:

Store at -20°C. Stable for one year after shipment.

Storage Buffer:

PBS with 0.02% sodium azide and 50% glycerol pH 7.3.

Aliquoting is unnecessary for -20°C storage

*** 20ul sizes contain 0.1%BSA

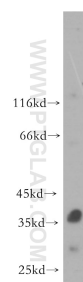
For technical support and original validation data for this product please contact:

T: 1 (888) 4PTGLAB (1-888-478-4522) (toll free in USA), or 1(312) 455-8498 (outside USA)

E: proteintech@ptglab.com
W: ptglab.com

This product is exclusively available under Proteintech Group brand and is not available to purchase from any other manufacturer.

Selected Validation Data



mouse thymus tissue were subjected to SDS PAGE followed by western blot with 17527-1-AP (RNASEH2B antibody) at dilution of 1:500 incubated at room temperature for 1.5 hours.