

For Research Use Only

# CTDSPL2 Polyclonal antibody

Catalog Number: 17532-1-AP

3 Publications



## Basic Information

### Catalog Number:

17532-1-AP

### Size:

150ul, Concentration: 300 ug/ml by Nanodrop and 167 ug/ml by Bradford method using BSA as the standard;

### Source:

Rabbit

### Isotype:

IgG

### Immunogen Catalog Number:

AG11581

### GenBank Accession Number:

BC035744

### GeneID (NCBI):

51496

### UNIPROT ID:

Q05D32

### Full Name:

CTD (carboxy-terminal domain, RNA polymerase II, polypeptide A) small phosphatase like 2

### Calculated MW:

466 aa, 53 kDa

### Observed MW:

67 kDa

### Purification Method:

Antigen affinity purification

### Recommended Dilutions:

WB 1:500-1:2400

IP 0.5-4.0 ug for 1.0-3.0 mg of total protein lysate

IHC 1:20-1:200

IF/ICC 1:50-1:500

## Applications

### Tested Applications:

WB, IHC, IF/ICC, IP, ELISA

### Cited Applications:

WB, IHC, IP

### Species Specificity:

human, mouse, rat

### Cited Species:

human

### Positive Controls:

**WB**: MCF7 cells, HeLa cells, HepG2 cells, human brain tissue, mouse eye tissue, mouse testis tissue, Y79 cells

**IP**: mouse testis tissue,

**IHC**: human endometrial cancer tissue, human testis tissue

**IF/ICC**: HeLa cells,

**Note-IHC: suggested antigen retrieval with TE buffer pH 9.0; (\*) Alternatively, antigen retrieval may be performed with citrate buffer pH 6.0**

## Background Information

CTD small phosphatase-like protein 2 (CTDSPL2) is also named as HSPC058 and HSPC129, belongs to the CTDSPL2 family. It is a putative RNA-polymerase II carboxy-terminal domain (CTD) phosphatase, whose specific CTD phosphatase activity was verified in vitro, and may regulate the dynamic phosphorylation of RNAP II CTD. (PMID: 17487459) It can obviously improve the expression of  $\epsilon$ - and  $\gamma$ -globin genes in K562 cells and CD34+ cells derived from UCB. (PMID: 20932329) This antibody is a rabbit polyclonal antibody raised against a region of human CTDSPL2.

## Notable Publications

Author	Pubmed ID	Journal	Application
Ma Yan-Ni YN	20932329	BMC Cell Biol	WB
Jie Du	31907356	Cell Death Dis	WB
Muzi Li	39209829	Cell Death Discov	WB,IP,IHC

## Storage

### Storage:

Store at -20°C. Stable for one year after shipment.

### Storage Buffer:

PBS with 0.02% sodium azide and 50% glycerol pH 7.3.

Aliquoting is unnecessary for -20°C storage

\*\*\* 20ul sizes contain 0.1% BSA

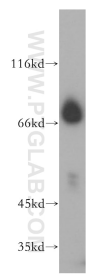
For technical support and original validation data for this product please contact:

T: 1 (888) 4PTGLAB (1-888-478-4522) (toll free in USA), or 1(312) 455-8498 (outside USA)

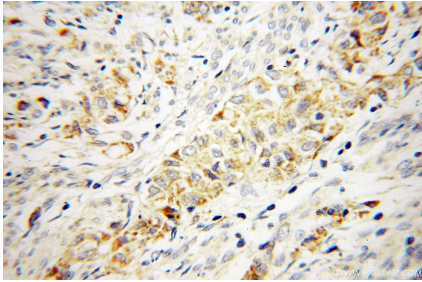
E: [proteintech@ptglab.com](mailto:proteintech@ptglab.com)  
W: [ptglab.com](http://ptglab.com)

This product is exclusively available under Proteintech Group brand and is not available to purchase from any other manufacturer.

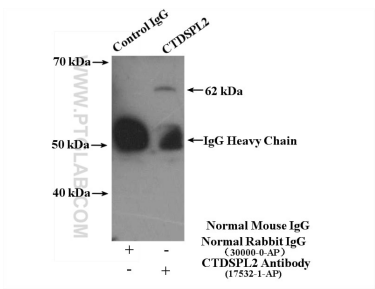
Selected Validation Data



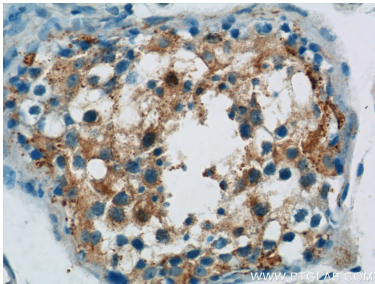
MCF7 cells were subjected to SDS PAGE followed by western blot with 17532-1-AP (CTDSP2 antibody) at dilution of 1:500 incubated at room temperature for 1.5 hours.



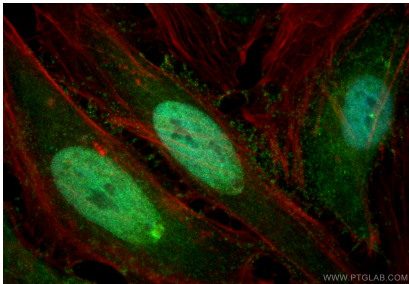
Immunohistochemical analysis of paraffin-embedded human endometrial cancer using 17532-1-AP (CTDSP2 antibody) at dilution of 1:100 (under 40x lens).



IP result of anti-CTDSP2 (IP:17532-1-AP, 4ug; Detection:17532-1-AP 1:500) with mouse testis tissue lysate 4400ug.



Immunohistochemical analysis of paraffin-embedded human testis tissue slide using 17532-1-AP (CTDSP2 Antibody) at dilution of 1:50 (under 40x lens).



Immunofluorescent analysis of (4% PFA) fixed HeLa cells using CTDSP2 antibody (17532-1-AP) at dilution of 1:200 and Multi-rAb Coralite ® Plus 488-Goat Anti-Rabbit Recombinant Secondary Antibody (H+L) (RGAR002), CL594-phalloidin (red).