

For Research Use Only

# CTDSPL2 Polyclonal antibody, PBS Only

Catalog Number: 17532-1-PBS



## Basic Information

### Catalog Number:

17532-1-PBS

### Size:

100ug, Concentration: 1 mg/ml by Nanodrop;

### Source:

Rabbit

### Isotype:

IgG

### Immunogen Catalog Number:

AG11581

### GenBank Accession Number:

BC035744

### GeneID (NCBI):

51496

### UNIPROT ID:

Q05D32

### Full Name:

CTD (carboxy-terminal domain, RNA polymerase II, polypeptide A) small phosphatase like 2

### Calculated MW:

466 aa, 53 kDa

### Observed MW:

67 kDa

### Purification Method:

Antigen affinity purification

## Applications

### Tested Applications:

WB, IHC, IF/ICC, IP, Indirect ELISA

### Species Specificity:

human, mouse, rat

## Background Information

CTD small phosphatase-like protein 2 (CTDSPL2) is also named as HSPC058 and HSPC129, belongs to the CTDSPL2 family. It is a putative RNA-polymerase II carboxy-terminal domain (CTD) phosphatase, whose specific CTD phosphatase activity was verified in vitro, and may regulate the dynamic phosphorylation of RNAP II CTD. (PMID: 17487459) It can obviously improve the expression of  $\epsilon$ - and  $\gamma$ -globin genes in K562 cells and CD34+ cells derived from UCB. (PMID: 20932329) This antibody is a rabbit polyclonal antibody raised against a region of human CTDSPL2.

## Storage

### Storage:

Store at -80°C.

### Storage Buffer:

PBS Only

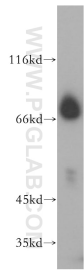
For technical support and original validation data for this product please contact:

T: 1 (888) 4PTGLAB (1-888-478-4522) (toll free in USA), or 1(312) 455-8498 (outside USA)

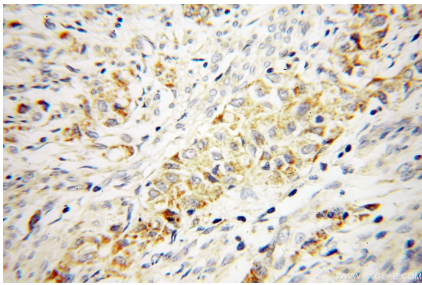
E: [proteintech@ptglab.com](mailto:proteintech@ptglab.com)  
W: [ptglab.com](http://ptglab.com)

This product is exclusively available under Proteintech Group brand and is not available to purchase from any other manufacturer.

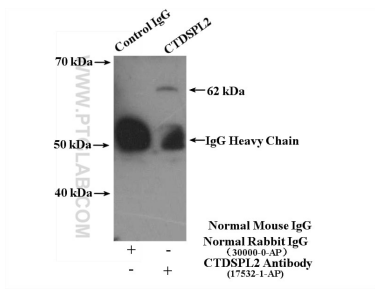
Selected Validation Data



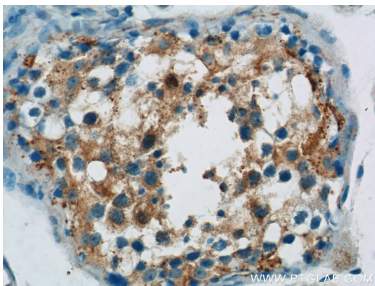
MCF7 cells were subjected to SDS PAGE followed by western blot with 17532-1-AP (CTDSPL2 antibody) at dilution of 1:500 incubated at room temperature for 1.5 hours. This data was developed using the same antibody clone with 17532-1-PBS in a different storage buffer formulation.



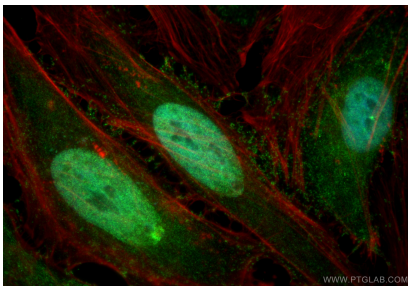
Immunohistochemical analysis of paraffin-embedded human endometrial cancer using 17532-1-AP (CTDSPL2 antibody) at dilution of 1:100 (under 40x lens). This data was developed using the same antibody clone with 17532-1-PBS in a different storage buffer formulation.



IP result of anti-CTDSPL2 (IP:17532-1-AP, 4ug; Detection:17532-1-AP 1:500) with mouse testis tissue lysate 4400ug. This data was developed using the same antibody clone with 17532-1-PBS in a different storage buffer formulation.



Immunohistochemical analysis of paraffin-embedded human testis tissue slide using 17532-1-AP (CTDSPL2 Antibody) at dilution of 1:50 (under 40x lens). This data was developed using the same antibody clone with 17532-1-PBS in a different storage buffer formulation.



Immunofluorescent analysis of (4% PFA) fixed HeLa cells using CTDSPL2 antibody (17532-1-AP) at dilution of 1:200 and Multi-rAb Coralite @ Plus 488-Goat Anti-Rabbit Recombinant Secondary Antibody (H+L) (RGAR002), CL594-phalloidin (red). This data was developed using the same antibody clone with 17532-1-PBS in a different storage buffer formulation.