

For Research Use Only

GGTLC1 Polyclonal antibody

Catalog Number: 17537-1-AP



Basic Information

Catalog Number: 17537-1-AP	GenBank Accession Number: BC040904	Purification Method: Antigen affinity purification
Size: 150ul , Concentration: 450 ug/ml by Nanodrop;	GeneID (NCBI): 92086	Recommended Dilutions: WB 1:1000-1:4000 IF/ICC 1:200-1:800
Source: Rabbit	UNIPROT ID: Q9BX51	
Isotype: IgG	Full Name: gamma-glutamyltransferase light chain 1	
Immunogen Catalog Number: AG11592	Calculated MW: 225 aa, 24 kDa	
	Observed MW: 24 kDa	

Applications

Tested Applications: WB, IF/ICC, ELISA	Positive Controls:
Species Specificity: human	WB : HepG2 cells, L02 cells, human urine IF/ICC : HepG2 cells,

Background Information

Gamma-glutamyltransferase light chain 1 (GGTLC1), initially named GGTL6, then GGTLA4, and later GGTLC1 in 2008, is a member of the gamma-glutamyl transferase (GGT) family. The most ubiquitously expressed human GGT gene, GGT1, encodes a single transmembrane polypeptide that is post-translationally processed to form a heavy and a light chain. Knockdown of GGTLC1 in Endometrial cancer (EC) cells was shown to induce G0/G1 phase arrest and apoptosis, underscoring the significance of GGTLC1 as a key regulator of these cellular processes in EC (PMID: 38841516).

Storage

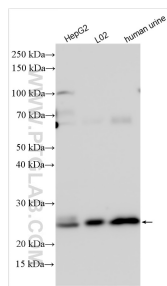
Storage:
Store at -20°C. Stable for one year after shipment.
Storage Buffer:
PBS with 0.02% sodium azide and 50% glycerol pH 7.3.
Aliquoting is unnecessary for -20°C storage

*** 20ul sizes contain 0.1% BSA

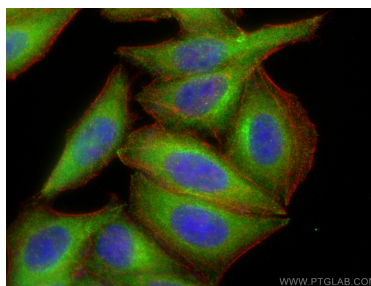
For technical support and original validation data for this product please contact:
T: 1 (888) 4PTGLAB (1-888-478-4522) (toll free in USA), or 1(312) 455-8498 (outside USA)
E: proteintech@ptglab.com
W: ptglab.com

This product is exclusively available under Proteintech Group brand and is not available to purchase from any other manufacturer.

Selected Validation Data



Various lysates were subjected to SDS PAGE followed by western blot with 17537-1-AP (GGTLC1 antibody) at dilution of 1:2000 incubated at room temperature for 1.5 hours.



Immunofluorescent analysis of (-20°C Ethanol) fixed HepG2 cells using GGTL1 antibody (17537-1-AP) at dilution of 1:400 and CoraLite® 488-Conjugated Goat Anti-Rabbit IgG(H+L) (SA00013-2), CL594-Phalloidin (red).