

For Research Use Only

GGTLC1 Polyclonal antibody, PBS Only

Catalog Number: 17537-1-PBS

Featured Product



Basic Information

Catalog Number:

17537-1-PBS

Size:

100ug, Concentration: 1 mg/ml by Nanodrop;

Source:

Rabbit

Isotype:

IgG

Immunogen Catalog Number:

AG11592

GenBank Accession Number:

BC040904

GeneID (NCBI):

92086

UNIPROT ID:

Q9BX51

Full Name:

gamma-glutamyltransferase light chain 1

Calculated MW:

225 aa, 24 kDa

Observed MW:

24 kDa

Purification Method:

Antigen affinity purification

Applications

Tested Applications:

WB, IF/ICC, Indirect ELISA

Species Specificity:

human

Background Information

Gamma-glutamyltransferase light chain 1 (GGTLC1), initially named GGTL6, then GGTLA4, and later GGTLC1 in 2008, is a member of the gamma-glutamyl transferase (GGT) family. The most ubiquitously expressed human GGT gene, GGT1, encodes a single transmembrane polypeptide that is post-translationally processed to form a heavy and a light chain. Knockdown of GGTLC1 in Endometrial cancer (EC) cells was shown to induce G0/G1 phase arrest and apoptosis, underscoring the significance of GGTLC1 as a key regulator of these cellular processes in EC (PMID: 38841516).

Storage

Storage:

Store at -80°C.

Storage Buffer:

PBS only, pH7.3

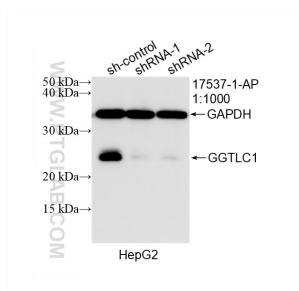
For technical support and original validation data for this product please contact:

T: 1 (888) 4PTGLAB (1-888-478-4522) (toll free in USA), or 1(312) 455-8498 (outside USA)

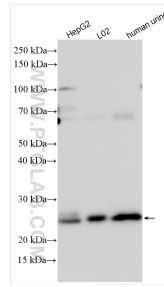
E: proteintech@ptglab.com
W: ptglab.com

This product is exclusively available under Proteintech Group brand and is not available to purchase from any other manufacturer.

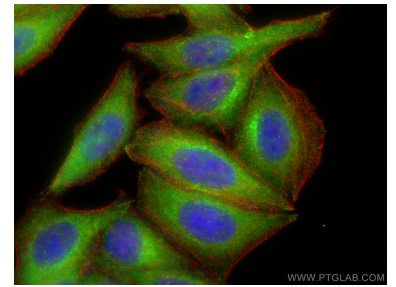
Selected Validation Data



WB result of GGTLC1 antibody (17537-1-AP; 1:1000; incubated at room temperature for 1.5 hours) with sh-Control and sh-GGTLC1 transfected HepG2 cells. This data was developed using the same antibody clone with 17537-1-PBS in a different storage buffer formulation.



Various lysates were subjected to SDS PAGE followed by western blot with 17537-1-AP (GGTLC1 antibody) at dilution of 1:2000 incubated at room temperature for 1.5 hours. This data was developed using the same antibody clone with 17537-1-PBS in a different storage buffer formulation.



Immunofluorescent analysis of (-20°C Ethanol) fixed HepG2 cells using GGTLC1 antibody (17537-1-AP) at dilution of 1:400 and CoraLite@488-Conjugated AffiniPure Goat Anti-Rabbit IgG(H+L) (SA00013-2), CL594-Phalloidin (red). This data was developed using the same antibody clone with 17537-1-PBS in a different storage buffer formulation.