

For Research Use Only

# ARPC1A Polyclonal antibody

Catalog Number: 17538-1-AP



## Basic Information

<b>Catalog Number:</b> 17538-1-AP	<b>GenBank Accession Number:</b> BC039594	<b>Purification Method:</b> Antigen affinity purification
<b>Size:</b> 150ul , Concentration: 450 ug/ml by Nanodrop;	<b>GeneID (NCBI):</b> 10552	<b>Recommended Dilutions:</b> WB 1:500-1:3000
<b>Source:</b> Rabbit	<b>UNIPROT ID:</b> Q92747	
<b>Isotype:</b> IgG	<b>Full Name:</b> actin related protein 2/3 complex, subunit 1A, 41kDa	
<b>Immunogen Catalog Number:</b> AG11593	<b>Calculated MW:</b> 370 aa, 42 kDa	
	<b>Observed MW:</b> 37-42 kDa	

## Applications

<b>Tested Applications:</b> WB, ELISA	<b>Positive Controls:</b> WB : HEK-293 cells, PC-3 cells
<b>Species Specificity:</b> human	

## Background Information

ARPC1A, also known as SOP2L, belongs to the WD repeat ARPC1 family. ARPC1A is most similar to ARPC1B, and the similarity between these two proteins suggests that they both may function as p41 subunit of the human Arp2/3 complex that has been implicated in the control of actin polymerization in cells (PMID: 9230079). ARPC1A functions as a component of the Arp2/3 complex which is involved in regulation of actin polymerization and together with an activating nucleation-promoting factor (NPF) mediates the formation of branched actin networks (PMID: 8978670). Western blot analysis detected ARPC1A at an apparent molecular mass of 37-42 kDa.

## Storage

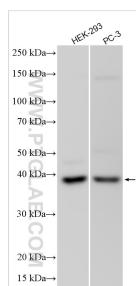
**Storage:**  
Store at -20°C. Stable for one year after shipment.  
**Storage Buffer:**  
PBS with 0.02% sodium azide and 50% glycerol pH 7.3.  
Aliquoting is unnecessary for -20°C storage

\*\*\* 20ul sizes contain 0.1% BSA

For technical support and original validation data for this product please contact:  
T: 1 (888) 4PTGLAB (1-888-478-4522) (toll free in USA), or 1(312) 455-8498 (outside USA)  
E: [proteintech@ptglab.com](mailto:proteintech@ptglab.com)  
W: [ptglab.com](http://ptglab.com)

This product is exclusively available under Proteintech Group brand and is not available to purchase from any other manufacturer.

## Selected Validation Data



Various lysates were subjected to SDS PAGE followed by western blot with 17538-1-AP (ARPC1A antibody) at dilution of 1:1500 incubated at room temperature for 1.5 hours.