

For Research Use Only

# SHOC2/Sur-8 Polyclonal antibody

Catalog Number: 17561-1-AP

Featured Product

8 Publications



## Basic Information

### Catalog Number:

17561-1-AP

### Size:

150ul, Concentration: 650 ug/ml by Nanodrop;

### Source:

Rabbit

### Isotype:

IgG

### Immunogen Catalog Number:

AG11754

### GenBank Accession Number:

BC050445

### GeneID (NCBI):

8036

### UNIPROT ID:

Q9UQ13

### Full Name:

soc-2 suppressor of clear homolog (C. elegans)

### Calculated MW:

582 aa, 65 kDa

### Observed MW:

65 kDa

### Purification Method:

Antigen affinity purification

### Recommended Dilutions:

WB 1:1000-1:4000

IHC 1:50-1:500

IF/ICC 1:50-1:500

## Applications

### Tested Applications:

WB, IHC, IF/ICC, ELISA

### Cited Applications:

WB, IHC, IP

### Species Specificity:

human, mouse, rat

### Cited Species:

human, mouse, monkey

**Note-IHC: suggested antigen retrieval with TE buffer pH 9.0; (\*) Alternatively, antigen retrieval may be performed with citrate buffer pH 6.0**

### Positive Controls:

**WB** : MCF-7 cells, Jurkat cells, mouse brain tissue, rat testis tissue, U-251 cells

**IHC** : human renal cell carcinoma tissue, human kidney tissue, mouse brain tissue, mouse kidney tissue

**IF/ICC** : HeLa cells, MCF-7 cells

## Notable Publications

Author	Pubmed ID	Journal	Application
Eun Ryoung Jang	26519477	J Cell Sci	WB, IP
Hideki Terai	33106373	Mol Cancer Res	IHC
Eun Ryoung Jang	25022756	Mol Cell Biol	WB, IP

## Storage

### Storage:

Store at -20°C. Stable for one year after shipment.

### Storage Buffer:

PBS with 0.02% sodium azide and 50% glycerol pH 7.3.

Aliquoting is unnecessary for -20°C storage

\*\*\* 20ul sizes contain 0.1% BSA

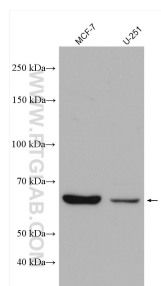
For technical support and original validation data for this product please contact:

T: 1 (888) 4PTGLAB (1-888-478-4522) (toll free in USA), or 1(312) 455-8498 (outside USA)

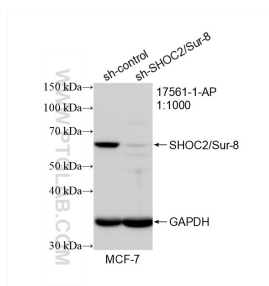
E: [proteintech@ptglab.com](mailto:proteintech@ptglab.com)  
W: [ptglab.com](http://ptglab.com)

This product is exclusively available under Proteintech Group brand and is not available to purchase from any other manufacturer.

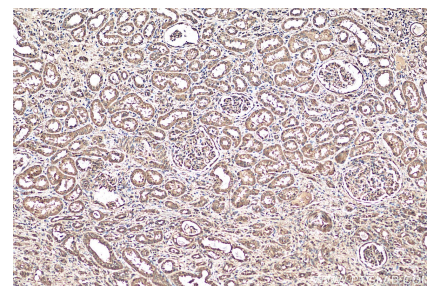
## Selected Validation Data



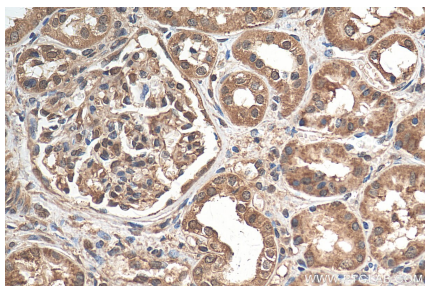
Various lysates were subjected to SDS PAGE followed by western blot with 17561-1-AP (Sur-8 antibody) at dilution of 1:2000 incubated at room temperature for 1.5 hours.



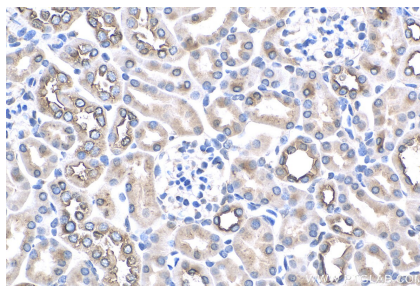
WB result of SHOC2/Sur-8 antibody (17561-1-AP; 1:1000; incubated at room temperature for 1.5 hours) with sh-Control and sh-SHOC2/Sur-8 transfected MCF-7 cells.



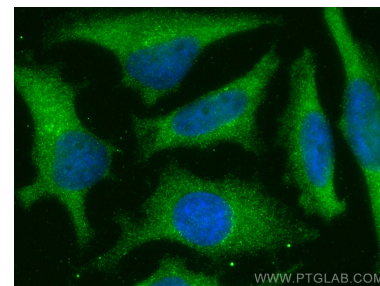
Immunohistochemical analysis of paraffin-embedded human renal cell carcinoma tissue slide using 17561-1-AP (Sur-8 antibody) at dilution of 1:200 (under 10x lens). Heat mediated antigen retrieval with Tris-EDTA buffer (pH 9.0).



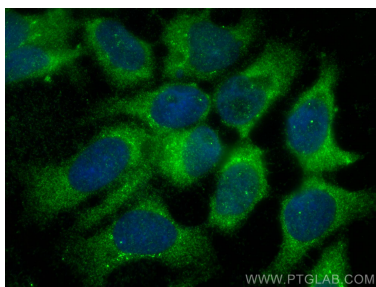
Immunohistochemical analysis of paraffin-embedded human renal cell carcinoma tissue slide using 17561-1-AP (Sur-8 antibody) at dilution of 1:200 (under 40x lens). Heat mediated antigen retrieval with Tris-EDTA buffer (pH 9.0).



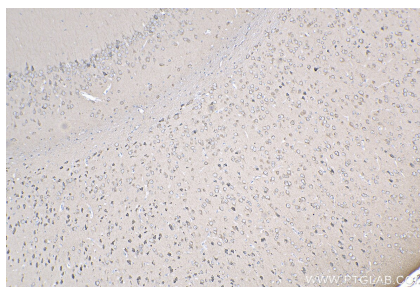
Immunohistochemical analysis of paraffin-embedded mouse kidney tissue slide using 17561-1-AP (Sur-8 antibody) at dilution of 1:200 (under 40x lens). Heat mediated antigen retrieval with Tris-EDTA buffer (pH 9.0).



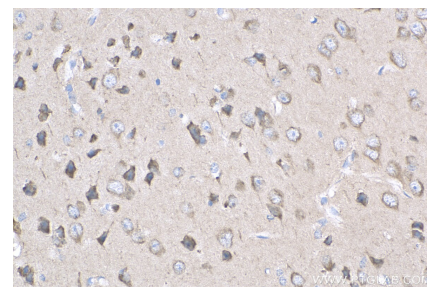
Immunofluorescent analysis of (-20°C Methanol) fixed HeLa cells using Sur-8 antibody (17561-1-AP) at dilution of 1:200 and CoraLite®488-Conjugated AffiniPure Goat Anti-Rabbit IgG(H+L).



Immunofluorescent analysis of (-20°C Methanol) fixed MCF-7 cells using Sur-8 antibody (17561-1-AP) at dilution of 1:200 and CoraLite®488-Conjugated AffiniPure Goat Anti-Rabbit IgG(H+L).



Immunohistochemical analysis of paraffin-embedded mouse brain tissue slide using 17561-1-AP (Sur-8 antibody) at dilution of 1:200 (under 10x lens). Heat mediated antigen retrieval with Tris-EDTA buffer (pH 9.0).



Immunohistochemical analysis of paraffin-embedded mouse brain tissue slide using 17561-1-AP (Sur-8 antibody) at dilution of 1:200 (under 40x lens). Heat mediated antigen retrieval with Tris-EDTA buffer (pH 9.0).