

For Research Use Only

CEP41 Polyclonal antibody, PBS Only

Catalog Number:17566-1-PBS

Featured Product



Basic Information

Catalog Number:

17566-1-PBS

Size:

100ug , Concentration: 1 mg/ml by Nanodrop;

Source:

Rabbit

Isotype:

IgG

Immunogen Catalog Number:

AG11764

GenBank Accession Number:

BC056162

GeneID (NCBI):

95681

UNIPROT ID:

Q9BYV8

Full Name:

testis specific, 14

Calculated MW:

301aa,33 kDa; 373aa,41 kDa

Observed MW:

45 kDa

Purification Method:

Antigen affinity purification

Applications

Tested Applications:

WB, IHC, Indirect ELISA

Species Specificity:

human, mouse, rat

Background Information

TSGA14 (testis-specific Gene A14), also known as CEP41 (centrosomal protein of 41 kDa), is a centrosomal protein identified in a mass-spectrometry-based proteomic analysis of human centrosomes. Mutations in the TSGA14 gene have been identified in families with autism spectrum disorders. (PMID:21438139)

Storage

Storage:

Store at -80°C.

Storage Buffer:

PBS only, pH7.3

For technical support and original validation data for this product please contact:

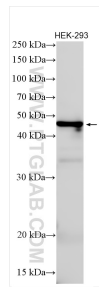
T: 1 (888) 4PTGLAB (1-888-478-4522) (toll free in USA), or 1(312) 455-8498 (outside USA)

E: proteintech@ptglab.com

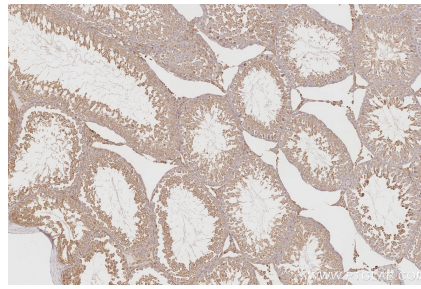
W: ptglab.com

This product is exclusively available under Proteintech Group brand and is not available to purchase from any other manufacturer.

Selected Validation Data



HEK-293 cell lysates were subjected to SDS PAGE followed by western blot with 17566-1-AP (TSGA14 antibody) at dilution of 1:800 incubated at room temperature for 1.5 hours. This data was developed using the same antibody clone with 17566-1-PBS in a different storage buffer formulation.



Immunohistochemical analysis of paraffin-embedded rat testis tissue slide using 17566-1-AP (TSGA14 antibody) at dilution of 1:500 (under 10x lens). Heat mediated antigen retrieval with Tris-EDTA buffer (pH 9.0). This data was developed using the same antibody clone with 17566-1-PBS in a different storage buffer formulation.