

For Research Use Only

Gamma Adducin Polyclonal antibody



Catalog Number: 17585-1-AP

Featured Product

4 Publications

Basic Information

Catalog Number:
17585-1-AP

Size:
150ul, Concentration: 450 µg/ml by Nanodrop and 200 µg/ml by Bradford method using BSA as the standard;

Source:
Rabbit

Isotype:
IgG

Immunogen Catalog Number:
AG11318

GenBank Accession Number:
BC062559

GeneID (NCBI):
120

Full Name:
adducin 3 (gamma)

Calculated MW:
76 kDa, 79 kDa

Observed MW:
80 kDa, 90 kDa

Purification Method:
Antigen affinity purification

Recommended Dilutions:
WB 1:200-1:1000
IP 0.5-4.0 µg for IP and 1:500-1:1000 for WB

Applications

Tested Applications:
IP, WB, ELISA

Cited Applications:
WB

Species Specificity:
human, mouse, rat

Cited Species:
human

Positive Controls:

WB : NIH/3T3 cells, K-562 cells, mouse kidney tissue

IP : NIH/3T3 cells,

Background Information

Notable Publications

Author	Pubmed ID	Journal	Application
Jin-Zhu Wang	33196842	J Mol Cell Biol	WB
Esther N Pesciotta	24454878	PLoS One	WB
Hewei Xiong	37605290	Stem Cell Res Ther	WB

Storage

Storage:

Store at -20°C. Stable for one year after shipment.

Storage Buffer:

PBS with 0.02% sodium azide and 50% glycerol pH 7.3.

Aliquoting is unnecessary for -20°C storage

*** 20ul sizes contain 0.1% BSA

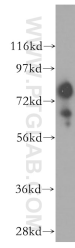
For technical support and original validation data for this product please contact:

T: 1 (888) 4PTGLAB (1-888-478-4522) (toll free in USA), or 1(312) 455-8498 (outside USA)

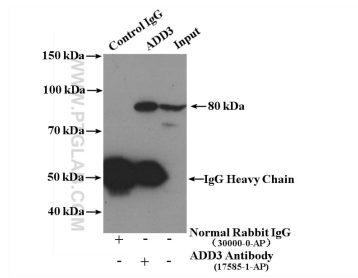
E: proteintech@ptglab.com
W: ptglab.com

This product is exclusively available under Proteintech Group brand and is not available to purchase from any other manufacturer.

Selected Validation Data



NIH/3T3 cells were subjected to SDS PAGE followed by western blot with 17585-1-AP (Gamma adducin antibody) at dilution of 1:400 incubated at room temperature for 1.5 hours.



IP Result of anti-Gamma adducin (IP:17585-1-AP, 4ug; Detection:17585-1-AP 1:500) with NIH/3T3 cells lysate 4000ug.