

For Research Use Only

DDX43 Polyclonal antibody

Catalog Number: 17591-1-AP

1 Publications



Basic Information

Catalog Number:

17591-1-AP

Size:

150ul, Concentration: 550 ug/ml by Nanodrop and 307 ug/ml by Bradford method using BSA as the standard;

Source:

Rabbit

Isotype:

IgG

Immunogen Catalog Number:

AG11484

GenBank Accession Number:

BC066938

GeneID (NCBI):

55510

UNIPROT ID:

Q9NXZ2

Full Name:

DEAD (Asp-Glu-Ala-Asp) box polypeptide 43

Calculated MW:

648 aa, 73 kDa

Observed MW:

73 kDa

Purification Method:

Antigen affinity purification

Recommended Dilutions:

WB 1:500-1:3000

IHC 1:20-1:200

IF/ICC 1:20-1:200

Applications

Tested Applications:

WB, IHC, IF/ICC, ELISA

Species Specificity:

human, mouse, rat

Note-IHC: suggested antigen retrieval with TE buffer pH 9.0; (*) Alternatively, antigen retrieval may be performed with citrate buffer pH 6.0

Positive Controls:

WB : HeLa cells, A375 cells, HepG2 cells, PC-3 cells

IHC : human lung cancer tissue,

IF/ICC : HepG2 cells,

Notable Publications

Author	Pubmed ID	Journal	Application
Yasuto Akiyama	24573400	Oncol Rep	

Storage

Storage:

Store at -20°C. Stable for one year after shipment.

Storage Buffer:

PBS with 0.02% sodium azide and 50% glycerol pH 7.3.

Aliquoting is unnecessary for -20°C storage

*** 20ul sizes contain 0.1% BSA

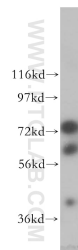
For technical support and original validation data for this product please contact:

T: 1 (888) 4PTGLAB (1-888-478-4522) (toll free in USA), or 1(312) 455-8498 (outside USA)

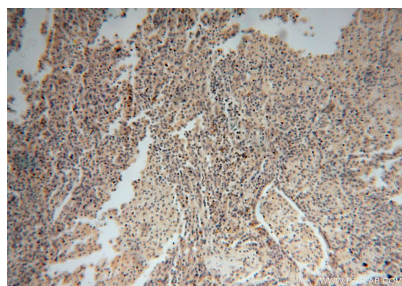
E: proteintech@ptglab.com
W: ptglab.com

This product is exclusively available under Proteintech Group brand and is not available to purchase from any other manufacturer.

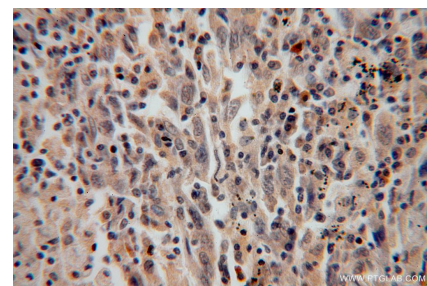
Selected Validation Data



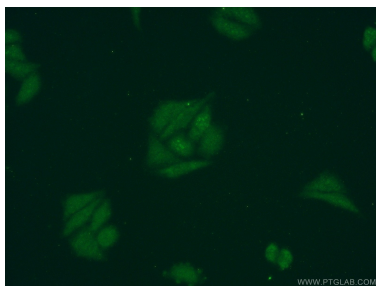
HeLa cells were subjected to SDS PAGE followed by western blot with 17591-1-AP (DDX43 antibody) at dilution of 1:800 incubated at room temperature for 1.5 hours.



Immunohistochemical analysis of paraffin-embedded human lung cancer using 17591-1-AP (DDX43 antibody) at dilution of 1:100 (under 10x lens).



Immunohistochemical analysis of paraffin-embedded human lung cancer using 17591-1-AP (DDX43 antibody) at dilution of 1:100 (under 40x lens).



Immunofluorescent analysis of HepG2 cells using 17591-1-AP (DDX43 antibody) at dilution of 1:50 and Alexa Fluor 488-conjugated Goat Anti-Rabbit IgG(H+L).