

For Research Use Only

SMYD4 Polyclonal antibody, PBS Only

Catalog Number: 17594-1-PBS

Featured Product



Basic Information

Catalog Number:

17594-1-PBS

Size:

100ug, Concentration: 1 mg/ml by Nanodrop;

Source:

Rabbit

Isotype:

IgG

Immunogen Catalog Number:

AG11552

GenBank Accession Number:

BC035077

GeneID (NCBI):

114826

UNIPROT ID:

Q8IYR2

Full Name:

SET and MYND domain containing 4

Calculated MW:

804 aa, 89 kDa

Observed MW:

89 kDa

Purification Method:

Antigen affinity purification

Applications

Tested Applications:

WB, IHC, IF/ICC, Indirect ELISA

Species Specificity:

human, rat

Background Information

SMYD4, also named as SET and MYND domain-containing protein 4, is a 804 amino acid protein, which contains 1 MYND-type zinc finger and 1 SET domain. SMYD4 belongs to the class V-like SAM-binding methyltransferase superfamily. SMYD4, as a potential tumor suppressor, plays a critical role in breast carcinogenesis at least partly through inhibiting the expression of Pdgfr-alpha, and could be a novel target for improving treatment of breast cancer. SMYD4 is a muscle-specific transcriptional modulator involved in development.

Storage

Storage:

Store at -80°C.

Storage Buffer:

PBS Only

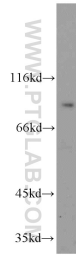
For technical support and original validation data for this product please contact:

T: 1 (888) 4PTGLAB (1-888-478-4522) (toll free in USA), or 1(312) 455-8498 (outside USA)

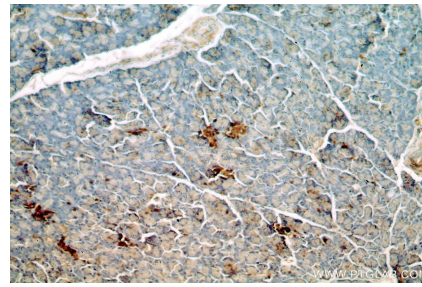
E: proteintech@ptglab.com
W: ptglab.com

This product is exclusively available under Proteintech Group brand and is not available to purchase from any other manufacturer.

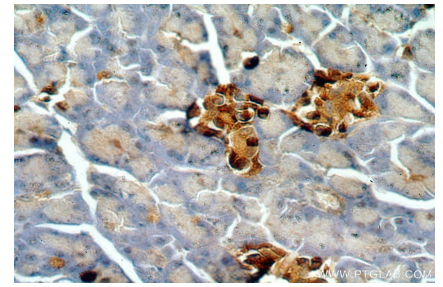
Selected Validation Data



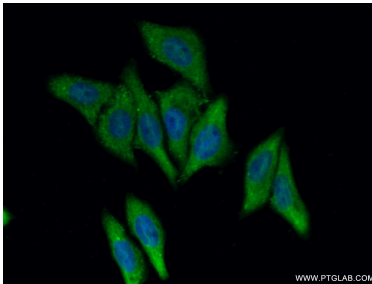
HepG2 cells were subjected to SDS PAGE followed by western blot with 17594-1-AP (SMYD4 antibody) at dilution of 1:300 incubated at room temperature for 1.5 hours. This data was developed using the same antibody clone with 17594-1-PBS in a different storage buffer formulation.



Immunohistochemical analysis of paraffin-embedded human pancreas using 17594-1-AP (SMYD4 antibody) at dilution of 1:50 (under 10x lens). This data was developed using the same antibody clone with 17594-1-PBS in a different storage buffer formulation.



Immunohistochemical analysis of paraffin-embedded human pancreas using 17594-1-AP (SMYD4 antibody) at dilution of 1:50 (under 40x lens). This data was developed using the same antibody clone with 17594-1-PBS in a different storage buffer formulation.



Immunofluorescent analysis of (-20°C Ethanol) fixed HepG2 cells using 17594-1-AP (SMYD4 antibody) at dilution of 1:50 and Alexa Fluor 488-conjugated AffiniPure Goat Anti-Rabbit IgG(H+L). This data was developed using the same antibody clone with 17594-1-PBS in a different storage buffer formulation.