

For Research Use Only

MTMR15 Polyclonal antibody

Catalog Number: 17600-1-AP

Featured Product

3 Publications



Basic Information

Catalog Number:

17600-1-AP

Size:

150ul, Concentration: 780 ug/ml by Nanodrop;

Source:

Rabbit

Isotype:

IgG

Immunogen Catalog Number:

AG11651

GenBank Accession Number:

BC047882

GeneID (NCBI):

22909

UNIPROT ID:

Q9Y2M0

Full Name:

myotubularin related protein 15

Calculated MW:

60 kDa, 114 kDa

Observed MW:

63-68 kDa, 120-140 kDa

Purification Method:

Antigen affinity purification

Recommended Dilutions:

WB 1:500-1:2000

IP 0.5-4.0 ug for 1.0-3.0 mg of total protein lysate

Applications

Tested Applications:

WB, IP, ELISA

Cited Applications:

WB, IP

Species Specificity:

human

Cited Species:

human

Positive Controls:

WB: HeLa cells, human spleen tissue

IP: HeLa cells,

Background Information

MTMR15, also named as FAN1 and KIAA1018, is a nuclease required for the repair of DNA interstrand cross-links (ICL) recruited at sites of DNA damage by monoubiquitinated FANCD2. It is specifically involved in repair of ICL-induced DNA breaks by being required for efficient homologous recombination, probably in the resolution of homologous recombination intermediates. MTMR15 has some isoforms with MW 114 kDa and 60 kDa. The MW will be migrated to 120-140 kDa and 63-68 kDa with modification.

Notable Publications

Author	Pubmed ID	Journal	Application
Shaozu Fu	35613597	Cell Rep	WB
Xinlin Xu	34117478	Nat Struct Mol Biol	WB
Mihoko Rikitake	31955481	Genes Cells	WB, IP

Storage

Storage:

Store at -20°C. Stable for one year after shipment.

Storage Buffer:

PBS with 0.02% sodium azide and 50% glycerol pH 7.3.

Aliquoting is unnecessary for -20°C storage

*** 20ul sizes contain 0.1% BSA

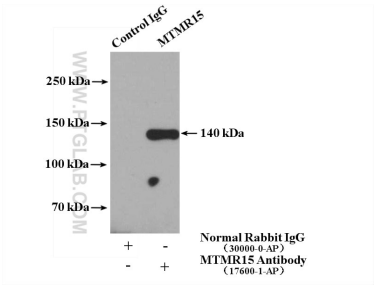
For technical support and original validation data for this product please contact:

T: 1 (888) 4PTGLAB (1-888-478-4522) (toll free in USA), or 1(312) 455-8498 (outside USA)

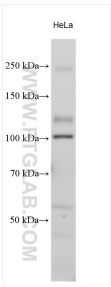
E: proteintech@ptglab.com
W: ptglab.com

This product is exclusively available under Proteintech Group brand and is not available to purchase from any other manufacturer.

Selected Validation Data



IP result of anti-MTMR15 (IP:17600-1-AP, 4ug;
Detection:17600-1-AP 1:300) with HeLa cells lysate
2800 ug.



Various lysates were subjected to SDS PAGE
followed by western blot with 17600-1-AP
(MTMR15 antibody) at dilution of 1:1000 incubated
at room temperature for 1.5 hours.