

For Research Use Only

CD3 Polyclonal antibody, PBS Only

Catalog Number: 17617-1-PBS

Featured Product



Basic Information

Catalog Number:

17617-1-PBS

Size:

100ug, Concentration: 1 mg/ml by Nanodrop;

Source:

Rabbit

Isotype:

IgG

Immunogen Catalog Number:

AG11797

GenBank Accession Number:

BC049847

GeneID (NCBI):

916

ENSEMBL Gene ID:

ENSG00000198851

UNIPROT ID:

P07766

Full Name:

CD3e molecule, epsilon (CD3-TCR complex)

Calculated MW:

207 aa, 23 kDa

Observed MW:

23-25 kDa

Purification Method:

Antigen affinity purification

Applications

Tested Applications:

WB, IHC, IF-P, IF-Fro, IP, Indirect ELISA

Species Specificity:

human, mouse, rat, pig

Background Information

CD3 is a complex of proteins that directly associates with the T cell receptor (TCR). The TCR/CD3 complex of T-lymphocytes consists of either a TCR alpha/beta or TCR gamma/delta heterodimer coexpressed at the cell surface with the invariant subunits of CD3 labeled gamma, delta, epsilon, zeta, and eta. The TCR recognizes antigens bound to major histocompatibility complex (MHC) molecules. TCR-mediated peptide-MHC recognition is transmitted to the CD3 complex, leading to the intracellular signal transduction. CD3 is considered to be a pan-T cell marker for detection of normal and neoplastic T cells. This anti-CD3 is a polyclonal antibody directed against the epsilon chain of human CD3 molecule.

Storage

Storage:

Store at -80°C.

Storage Buffer:

PBS only, pH7.3

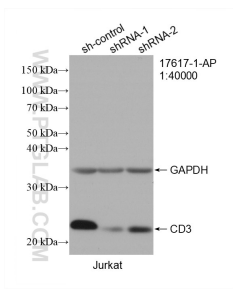
For technical support and original validation data for this product please contact:

T: 1 (888) 4PTGLAB (1-888-478-4522) (toll free in USA), or 1(312) 455-8498 (outside USA)

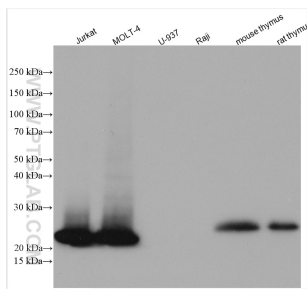
E: proteintech@ptglab.com
W: ptglab.com

This product is exclusively available under Proteintech Group brand and is not available to purchase from any other manufacturer.

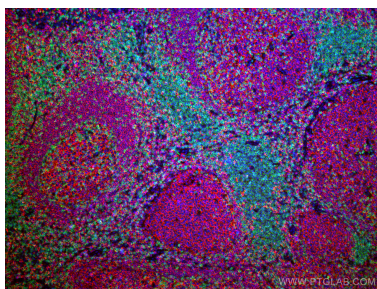
Selected Validation Data



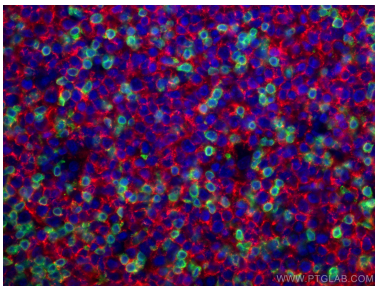
WB result of CD3 antibody (17617-1-AP; 1:40000; incubated at room temperature for 1.5 hours) with sh-Control and sh-CD3 transfected Jurkat cells. This data was developed using the same antibody clone with 17617-1-PBS in a different storage buffer formulation.



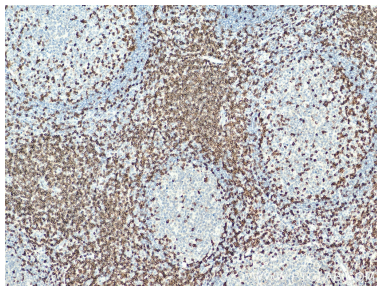
Jurkat cells (CD3+), MOLT-4 cells (CD3+), U-937 cells (CD3-), Raji cells (CD3-), mouse thymus tissue, and rat thymus tissue were subjected to SDS PAGE followed by western blot with 17617-1-AP (CD3 antibody) at dilution of 1:4000 incubated at room temperature for 1.5 hours. This data was developed using the same antibody clone with 17617-1-PBS in a different storage buffer formulation.



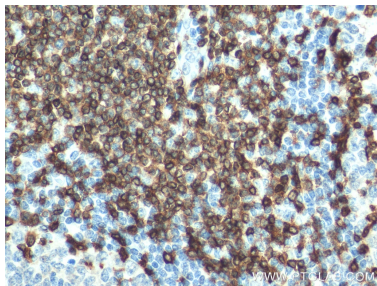
Immunofluorescent analysis of (4% PFA) fixed human tonsillitis tissue using CD3 antibody (17617-1-AP) at dilution of 1:200 and Coralite®488-Conjugated AffiniPure Goat Anti-Rabbit IgG(H+L), CD20 antibody (60271-1-Ig, Clone: 4A7G3, red). This data was developed using the same antibody clone with 17617-1-PBS in a different storage buffer formulation.



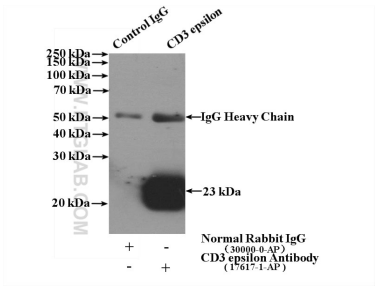
Immunofluorescent analysis of (4% PFA) fixed human tonsillitis tissue using CD3 antibody (17617-1-AP) at dilution of 1:200 and Coralite®488-Conjugated AffiniPure Goat Anti-Rabbit IgG(H+L), CD20 antibody (60271-1-Ig, Clone: 4A7G3, red). This data was developed using the same antibody clone with 17617-1-PBS in a different storage buffer formulation.



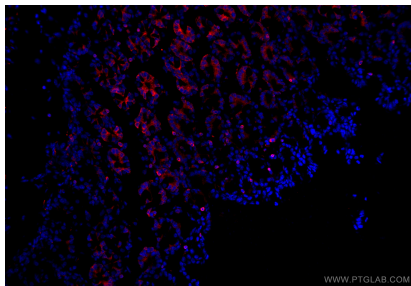
Immunohistochemical analysis of paraffin-embedded human tonsillitis tissue slide using 17617-1-AP (CD3 antibody) at dilution of 1:1000 (under 10x lens). Heat mediated antigen retrieval with Tris-EDTA buffer (pH 9.0). This data was developed using the same antibody clone with 17617-1-PBS in a different storage buffer formulation.



Immunohistochemical analysis of paraffin-embedded human tonsillitis tissue slide using 17617-1-AP (CD3 antibody) at dilution of 1:1000 (under 40x lens). Heat mediated antigen retrieval with Tris-EDTA buffer (pH 9.0). This data was developed using the same antibody clone with 17617-1-PBS in a different storage buffer formulation.



IP result of anti-CD3 (IP:17617-1-AP, 4ug; Detection:17617-1-AP 1:1000) with Jurkat cells lysate 3600ug. This data was developed using the same antibody clone with 17617-1-PBS in a different storage buffer formulation.



Immunofluorescent analysis of (4% PFA) fixed frozen OCT-embedded mouse colon tissue using CD3 antibody (17617-1-AP) at dilution of 1:400 and Coralite®594-Conjugated Goat Anti-Rabbit IgG(H+L) (SA00013-4). This data was developed using the same antibody clone with 17617-1-PBS in a different storage buffer formulation.