

For Research Use Only

# RPL26 Polyclonal antibody

Catalog Number: 17619-1-AP

Featured Product

7 Publications



## Basic Information

### Catalog Number:

17619-1-AP

### Size:

150ul, Concentration: 700 ug/ml by Nanodrop and 347 ug/ml by Bradford method using BSA as the standard;

### Source:

Rabbit

### Isotype:

IgG

### Immunogen Catalog Number:

AG11821

### GenBank Accession Number:

BC071664

### GeneID (NCBI):

6154

### UNIPROT ID:

P61254

### Full Name:

ribosomal protein L26

### Calculated MW:

145 aa, 17 kDa

### Observed MW:

17-22 kDa

### Purification Method:

Antigen affinity purification

### Recommended Dilutions:

WB 1:500-1:1000

IF/ICC 1:50-1:500

## Applications

### Tested Applications:

WB, IF/ICC, ELISA

### Cited Applications:

WB, IHC, CoIP

### Species Specificity:

human

### Cited Species:

human, mouse

### Positive Controls:

WB : K-562 cells, HeLa cells, HepG2 cells, Jurkat cells

IF/ICC : HeLa cells,

## Notable Publications

Author	Pubmed ID	Journal	Application
Meijuan Zou	33371207	Genes (Basel)	WB
Wonyul Jang	36520888	Science	WB
Sunwang Xu	31792210	Nat Commun	WB

## Storage

### Storage:

Store at -20°C. Stable for one year after shipment.

### Storage Buffer:

PBS with 0.02% sodium azide and 50% glycerol pH 7.3.

Aliquoting is unnecessary for -20°C storage

\*\*\* 20ul sizes contain 0.1% BSA

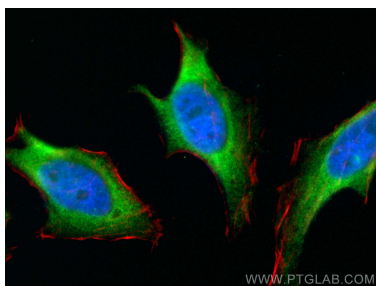
For technical support and original validation data for this product please contact:

T: 1 (888) 4PTGLAB (1-888-478-4522) (toll free in USA), or 1(312) 455-8498 (outside USA)

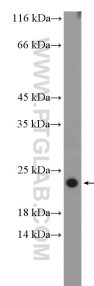
E: [proteintech@ptglab.com](mailto:proteintech@ptglab.com)  
W: [ptglab.com](http://ptglab.com)

This product is exclusively available under Proteintech Group brand and is not available to purchase from any other manufacturer.

## Selected Validation Data



Immunofluorescent analysis of (4% PFA) fixed HeLa cells using RPL26 antibody (17619-1-AP) at dilution of 1:200 and CoraLite®488-Conjugated Goat Anti-Rabbit IgG(H+L), CL594-phalloidin (red).



K-562 cells were subjected to SDS PAGE followed by western blot with 17619-1-AP (RPL26 Antibody) at dilution of 1:600 incubated at room temperature for 1.5 hours.