

For Research Use Only

EHBP1 Polyclonal antibody

Catalog Number: 17637-1-AP

Featured Product

8 Publications



Basic Information

Catalog Number:

17637-1-AP

Size:

150ul, Concentration: 700 ug/ml by Nanodrop and 233 ug/ml by Bradford method using BSA as the standard;

Source:

Rabbit

Isotype:

IgG

Immunogen Catalog Number:

AG11916

GenBank Accession Number:

BC067215

GeneID (NCBI):

23301

UNIPROT ID:

Q8NDI1

Full Name:

EH domain binding protein 1

Calculated MW:

132 kDa

Observed MW:

160-180 kDa

Purification Method:

Antigen affinity purification

Recommended Dilutions:

WB 1:1000-1:4000

IP 0.5-4.0 ug for 1.0-3.0 mg of total protein lysate

IHC 1:20-1:200

IF/ICC 1:200-1:800

Applications

Tested Applications:

WB, IHC, IF/ICC, IP, ELISA

Cited Applications:

WB, IF, IP, ColP

Species Specificity:

human, mouse, rat

Cited Species:

human, mouse, rat

Note-IHC: suggested antigen retrieval with TE buffer pH 9.0; (*) Alternatively, antigen retrieval may be performed with citrate buffer pH 6.0

Positive Controls:

WB : DU 145 cells, HepG2 cells

IP : mouse liver tissue,

IHC : human testis tissue, human lung tissue

IF/ICC : HepG2 cells,

Notable Publications

Author	Pubmed ID	Journal	Application
Tomoya Eguchi	30209220	Proc Natl Acad Sci U S A	WB
Claudia Matthaeus	36433988	Nat Commun	WB,IF
Joanna R Kovalski	30639242	Mol Cell	IF

Storage

Storage:

Store at -20°C. Stable for one year after shipment.

Storage Buffer:

PBS with 0.02% sodium azide and 50% glycerol pH 7.3.

Aliquoting is unnecessary for -20°C storage

*** 20ul sizes contain 0.1% BSA

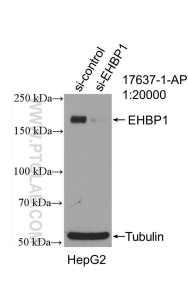
For technical support and original validation data for this product please contact:

T: 1 (888) 4PTGLAB (1-888-478-4522) (toll free in USA), or 1(312) 455-8498 (outside USA)

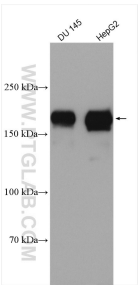
E: proteintech@ptglab.com
W: ptglab.com

This product is exclusively available under Proteintech Group brand and is not available to purchase from any other manufacturer.

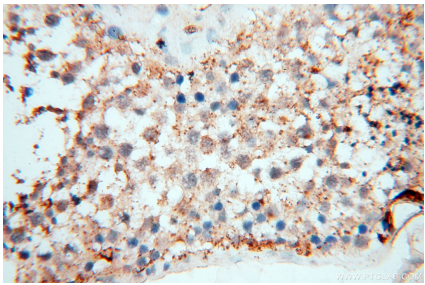
Selected Validation Data



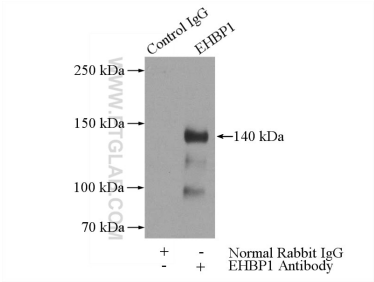
WB result of EHP1 antibody (17637-1-AP; 1:20000; incubated at room temperature for 1.5 hours) with sh-Control and sh-EHP1 transfected HepG2 cells.



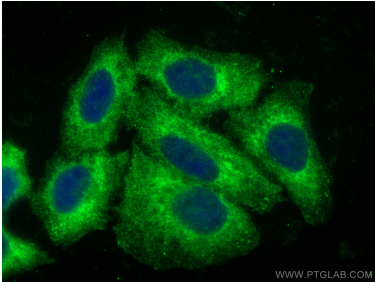
Various lysates were subjected to SDS PAGE followed by western blot with 17637-1-AP (EHP1 antibody) at dilution of 1:2000 incubated at room temperature for 1.5 hours.



Immunohistochemical analysis of paraffin-embedded human testis using 17637-1-AP (EHP1 antibody) at dilution of 1:100 (under 40x lens).



IP result of anti-EHP1 (IP:17637-1-AP, 4ug; Detection:17637-1-AP 1:500) with mouse liver tissue lysate 4000ug.



Immunofluorescent analysis of (-20°C Ethanol) fixed HepG2 cells using EHP1 antibody (17637-1-AP) at dilution of 1:400 and CoraLite®488-Conjugated AffiniPure Goat Anti-Rabbit IgG(H+L) (SA00013-2).