

For Research Use Only

# EHBP1 Polyclonal antibody, PBS Only

Catalog Number:17637-1-PBS

Featured Product



## Basic Information

Catalog Number:

17637-1-PBS

Size:

100ug , Concentration: 1 mg/ml by Nanodrop;

Source:

Rabbit

Isotype:

IgG

Immunogen Catalog Number:

AG11916

GenBank Accession Number:

BC067215

GeneID (NCBI):

23301

UNIPROT ID:

Q8NDI1

Full Name:

EH domain binding protein 1

Calculated MW:

132 kDa

Observed MW:

160-180 kDa

Purification Method:

Antigen affinity purification

## Applications

Tested Applications:

WB, IHC, IF/ICC, IP, Indirect ELISA

Species Specificity:

human, mouse, rat

## Storage

Storage:

Store at -80°C.

Storage Buffer:

PBS only, pH7.3

For technical support and original validation data for this product please contact:

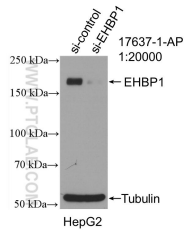
T: 1 (888) 4PTGLAB (1-888-478-4522) (toll free in USA), or 1(312) 455-8498 (outside USA)

E: [proteintech@ptglab.com](mailto:proteintech@ptglab.com)

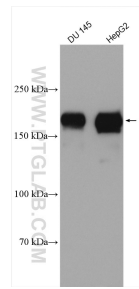
W: [ptglab.com](http://ptglab.com)

This product is exclusively available under Proteintech Group brand and is not available to purchase from any other manufacturer.

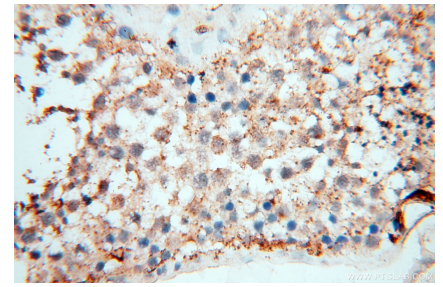
## Selected Validation Data



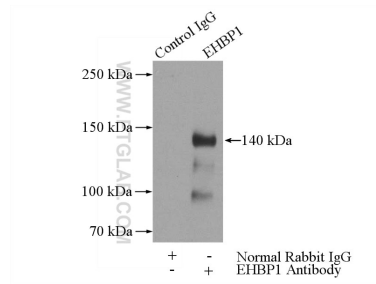
WB result of EHP1 antibody (17637-1-AP; 1:20000; incubated at room temperature for 1.5 hours) with sh-Control and sh-EHP1 transfected HepG2 cells. This data was developed using the same antibody clone with 17637-1-PBS in a different storage buffer formulation.



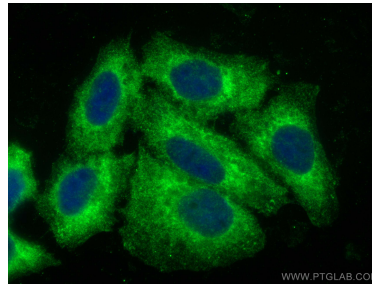
Various lysates were subjected to SDS PAGE followed by western blot with 17637-1-AP (EHP1 antibody) at dilution of 1:2000 incubated at room temperature for 1.5 hours. This data was developed using the same antibody clone with 17637-1-PBS in a different storage buffer formulation.



Immunohistochemical analysis of paraffin-embedded human testis using 17637-1-AP (EHP1 antibody) at dilution of 1:100 (under 40x lens). This data was developed using the same antibody clone with 17637-1-PBS in a different storage buffer formulation.



IP result of anti-EHP1 (IP:17637-1-AP, 4 $\mu$ g; Detection:17637-1-AP 1:500) with mouse liver tissue lysate 4000 $\mu$ g. This data was developed using the same antibody clone with 17637-1-PBS in a different storage buffer formulation.



Immunofluorescent analysis of (-20°C Ethanol) fixed HepG2 cells using EHP1 antibody (17637-1-AP) at dilution of 1:400 and CoraLite®488-Conjugated AffiniPure Goat Anti-Rabbit IgG(H+L) (SA00013-2). This data was developed using the same antibody clone with 17637-1-PBS in a different storage buffer formulation.