

For Research Use Only

# MON1B Polyclonal antibody

Catalog Number: 17638-1-AP

Featured Product

1 Publications



## Basic Information

Catalog Number:

17638-1-AP

Size:

150ul, Concentration: 650 ug/ml by Nanodrop;

Source:

Rabbit

Isotype:

IgG

Immunogen Catalog Number:

AG9920

GenBank Accession Number:

BC024277

GeneID (NCBI):

22879

UNIPROT ID:

Q7L1V2

Full Name:

MON1 homolog B (yeast)

Calculated MW:

547 aa, 59 kDa

Observed MW:

59 kDa

Purification Method:

Antigen affinity purification

Recommended Dilutions:

WB 1:1000-1:4000

IF/ICC 1:50-1:500

## Applications

Tested Applications:

WB, IF/ICC, ELISA

Cited Applications:

WB, IF

Species Specificity:

human

Cited Species:

human

Positive Controls:

WB : HeLa cells, Jurkat cells, K-562 cells

IF/ICC : HeLa cells,

## Background Information

Vacuolar fusion protein MON1 homolog B (MON1B) is also named as HSRG1, KIAA0872 and SAND2, and belongs to the MON1/SAND family. The membrane recruitment of MON1B, a homolog of yeast MON1 protein in mammals, is essential for vesicular fusion of early endosomes (PMID:26987402).

## Notable Publications

Author	Pubmed ID	Journal	Application
Ximing Shao	26987402	Cell Res	WB,IF

## Storage

Storage:

Store at -20°C. Stable for one year after shipment.

Storage Buffer:

PBS with 0.02% sodium azide and 50% glycerol pH 7.3.

Aliquoting is unnecessary for -20°C storage

\*\*\* 20ul sizes contain 0.1% BSA

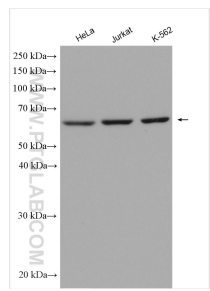
For technical support and original validation data for this product please contact:

T: 1 (888) 4PTGLAB (1-888-478-4522) (toll free in USA), or 1(312) 455-8498 (outside USA)

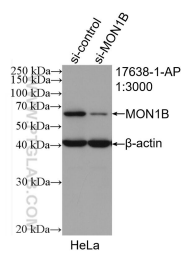
E: [proteintech@ptglab.com](mailto:proteintech@ptglab.com)  
W: [ptglab.com](http://ptglab.com)

This product is exclusively available under Proteintech Group brand and is not available to purchase from any other manufacturer.

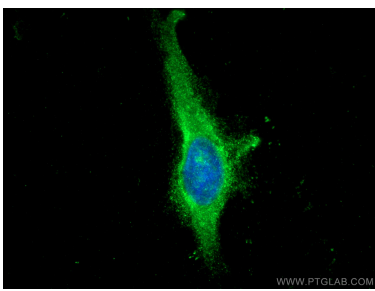
Selected Validation Data



Various lysates were subjected to SDS PAGE followed by western blot with 17638-1-AP (MON1B antibody) at dilution of 1:2000 incubated at room temperature for 1.5 hours.



WB result of MON1B antibody (17638-1-AP; 1:3000; incubated at room temperature for 1.5 hours) with sh-Control and sh-MON1B transfected HeLa cells.



Immunofluorescent analysis of (-20°C Methanol) fixed HeLa cells using MON1B antibody (17638-1-AP) at dilution of 1:200 and CoraLite®488-Conjugated Goat Anti-Rabbit IgG(H+L).