

For Research Use Only

SPCS3 Polyclonal antibody

Catalog Number: 17640-1-AP



Basic Information

Catalog Number: 17640-1-AP	GenBank Accession Number: BC047290	Purification Method: Antigen affinity purification
Size: 150ul , Concentration: 500 ug/ml by Nanodrop;	GeneID (NCBI): 60559	Recommended Dilutions: WB 1:1000-1:4000 IHC 1:50-1:500
Source: Rabbit	UNIPROT ID: P61009	
Isotype: IgG	Full Name: signal peptidase complex subunit 3 homolog (S. cerevisiae)	
Immunogen Catalog Number: AG11780	Calculated MW: 180 aa, 20 kDa	
	Observed MW: 23 kDa	

Applications

Tested Applications: WB, IHC, ELISA	Positive Controls:
Species Specificity: human, mouse	WB : HeLa cells, U2OS cells, mouse kidney tissue, mouse liver tissue
Note-IHC: suggested antigen retrieval with TE buffer pH 9.0; (*) Alternatively, antigen retrieval may be performed with citrate buffer pH 6.0	IHC : human placenta tissue, rat liver tissue

Background Information

The microsomal signal peptidase complex (SPC), which is an essential membrane component in the endoplasmic reticulum (ER), has five subunits, including SEC11A, SEC11C, SPCS1, SPCS2, and SPCS3. Functionally, SPC removes signal peptides (SPs) from a series of secretory pre-proteins with high specificity. The dysregulation of the other SPC subunits was also observed in some tumors. SPCS3 expression can be used as a component of a risk score model to predict the survival of patients with pancreatic adenocarcinoma. (PMID: 35653344)

Storage

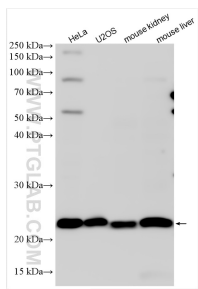
Storage:
Store at -20°C. Stable for one year after shipment.
Storage Buffer:
PBS with 0.02% sodium azide and 50% glycerol pH 7.3.
Aliquoting is unnecessary for -20°C storage

*** 20ul sizes contain 0.1% BSA

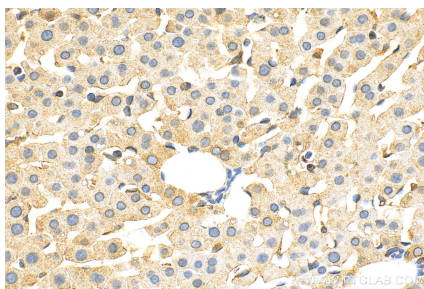
For technical support and original validation data for this product please contact:
T: 1 (888) 4PTGLAB (1-888-478-4522) (toll free in USA), or 1(312) 455-8498 (outside USA)
E: proteintech@ptglab.com
W: ptglab.com

This product is exclusively available under Proteintech Group brand and is not available to purchase from any other manufacturer.

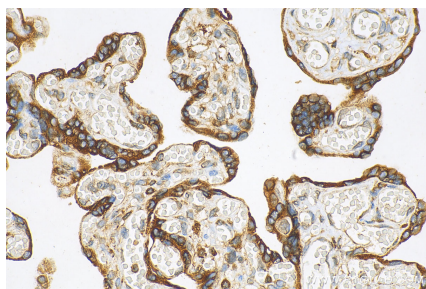
Selected Validation Data



Various lysates were subjected to SDS PAGE followed by western blot with 17640-1-AP (SPCS3 antibody) at dilution of 1:2000 incubated at room temperature for 1.5 hours.



Immunohistochemical analysis of paraffin-embedded rat liver tissue slide using 17640-1-AP (SPCS3 antibody) at dilution of 1:200 (under 40x lens). Heat mediated antigen retrieval with Tris-EDTA buffer (pH 9.0).



Immunohistochemical analysis of paraffin-embedded human placenta tissue slide using 17640-1-AP (SPCS3 antibody) at dilution of 1:200 (under 40x lens). Heat mediated antigen retrieval with Tris-EDTA buffer (pH 9.0).