

For Research Use Only

LGR6 Polyclonal antibody

Catalog Number: 17658-1-AP

Featured Product

8 Publications



Basic Information

Catalog Number:

17658-1-AP

Size:

150ul, Concentration: 350 ug/ml by Nanodrop;

Source:

Rabbit

Isotype:

IgG

Immunogen Catalog Number:

AG11909

GenBank Accession Number:

BC047905

GeneID (NCBI):

59352

UNIPROT ID:

Q9HBX8

Full Name:

leucine-rich repeat-containing G protein-coupled receptor 6

Calculated MW:

915 aa, 99 kDa

Observed MW:

104 kDa

Purification Method:

Antigen affinity purification

Recommended Dilutions:

WB 1:500-1:1000

IHC 1:50-1:500

Applications

Tested Applications:

WB, IHC, ELISA

Cited Applications:

WB, IHC, ELISA

Species Specificity:

human, mouse, rat

Cited Species:

human, mouse

Note-IHC: suggested antigen retrieval with TE buffer pH 9.0; (*) Alternatively, antigen retrieval may be performed with citrate buffer pH 6.0

Positive Controls:

WB: HUVEC cells, human brain tissue, mouse testis tissue, HeLa cells, LNCaP cells, PC-3 cells

IHC: human testis tissue, human spleen tissue, human ovary tissue

Background Information

LGR6 (Leucine-rich repeat-containing G-protein coupled receptor 6) is a seven-transmembrane protein. LGR6 is a high affinity receptor of R-spondins that potentiates the canonical Wnt signaling pathway and acts as a marker of multipotent stem cells in the epidermis. It potentially functions as a tumor suppressor. (PMID: 20223988; 20417836; 22615920)

Notable Publications

Author	Pubmed ID	Journal	Application
Nan Chiang	31657786	J Clin Invest	
Raquel Rodrigues	31163044	PLoS One	WB
Vikram Khedgikar	30828690	JBMR Plus	WB

Storage

Storage:

Store at -20°C. Stable for one year after shipment.

Storage Buffer:

PBS with 0.02% sodium azide and 50% glycerol pH 7.3.

Aliquoting is unnecessary for -20°C storage

*** 20ul sizes contain 0.1% BSA

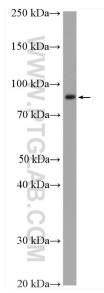
For technical support and original validation data for this product please contact:

T: 1 (888) 4PTGLAB (1-888-478-4522) (toll free in USA), or 1(312) 455-8498 (outside USA)

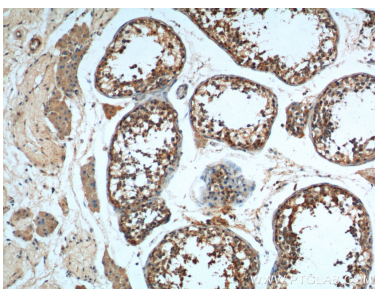
E: proteintech@ptglab.com
W: ptglab.com

This product is exclusively available under Proteintech Group brand and is not available to purchase from any other manufacturer.

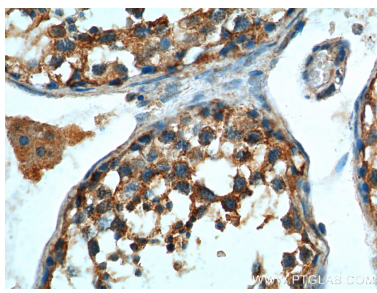
Selected Validation Data



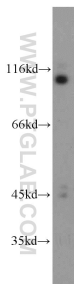
HUVEC cells were subjected to SDS PAGE followed by western blot with 17658-1-AP (LGR6 antibody) at dilution of 1:600 incubated at room temperature for 1.5 hours.



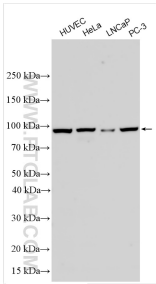
Immunohistochemical analysis of paraffin-embedded human testis tissue slide using 17658-1-AP (LGR6 Antibody) at dilution of 1:200 (under 10x lens).



Immunohistochemical analysis of paraffin-embedded human testis tissue slide using 17658-1-AP (LGR6 Antibody) at dilution of 1:200 (under 40x lens).



mouse testis tissue were subjected to SDS PAGE followed by western blot with 17658-1-AP (LGR6 antibody) at dilution of 1:100 incubated at room temperature for 1.5 hours.



Various lysates were subjected to SDS PAGE followed by western blot with 17658-1-AP (LGR6 antibody) at dilution of 1:1000 incubated at room temperature for 1.5 hours.