

For Research Use Only

# CPNE2 Polyclonal antibody, PBS Only

Catalog Number:17664-1-PBS



## Basic Information

<b>Catalog Number:</b> 17664-1-PBS	<b>GenBank Accession Number:</b> BC053658	<b>Purification Method:</b> Antigen affinity purification
<b>Size:</b> 100ug , Concentration: 1 mg/ml by Nanodrop;	<b>GeneID (NCBI):</b> 221184	
<b>Source:</b> Rabbit	<b>UNIPROT ID:</b> Q96FN4	
<b>Isotype:</b> IgG	<b>Full Name:</b> copine II	
<b>Immunogen Catalog Number:</b> AG11946	<b>Calculated MW:</b> 548 aa, 61 kDa	
	<b>Observed MW:</b> 61 kDa	

## Applications

**Tested Applications:**  
WB, IHC, Indirect ELISA

**Species Specificity:**  
human, mouse, rat

## Background Information

Copines are a family of evolutionarily conserved calcium-dependent phospholipid-binding proteins (PMID: 9430674). They contain two Ca(2+)- and phospholipid-binding domains known as C2 domains. Copines are potentially involved in regulating membrane trafficking and in protein-protein interactions.

## Storage

**Storage:**  
Store at -80°C.

**Storage Buffer:**  
PBS Only

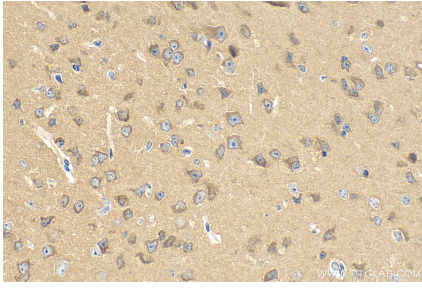
For technical support and original validation data for this product please contact:

T: 1 (888) 4PTGLAB (1-888-478-4522) (toll free  
in USA), or 1(312) 455-8498 (outside USA)

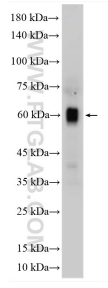
E: [proteintech@ptglab.com](mailto:proteintech@ptglab.com)  
W: [ptglab.com](http://ptglab.com)

**This product is exclusively available under Proteintech Group brand and is not available to purchase from any other manufacturer.**

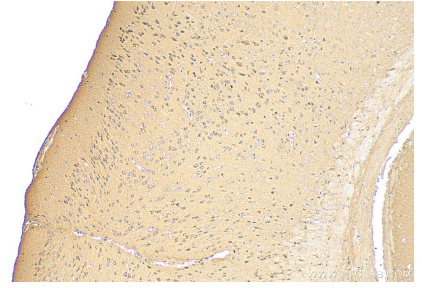
## Selected Validation Data



Immunohistochemical analysis of paraffin-embedded mouse brain tissue slide using 17664-1-AP (CPNE2 antibody) at dilution of 1:200 (under 40x lens). Heat mediated antigen retrieval with Tris-EDTA buffer (pH 9.0). This data was developed using the same antibody clone with 17664-1-PBS in a different storage buffer formulation.



mouse brain tissue were subjected to SDS PAGE followed by western blot with 17664-1-AP (CPNE2 antibody) at dilution of 1:500 incubated at room temperature for 1.5 hours. This data was developed using the same antibody clone with 17664-1-PBS in a different storage buffer formulation.



Immunohistochemical analysis of paraffin-embedded mouse brain tissue slide using 17664-1-AP (CPNE2 antibody) at dilution of 1:200 (under 10x lens). Heat mediated antigen retrieval with Tris-EDTA buffer (pH 9.0). This data was developed using the same antibody clone with 17664-1-PBS in a different storage buffer formulation.