

For Research Use Only

MSX1 Polyclonal antibody

Catalog Number: 17678-1-AP

2 Publications



Basic Information

Catalog Number:

17678-1-AP

Size:

150ul, Concentration: 700 ug/ml by Nanodrop and 393 ug/ml by Bradford method using BSA as the standard;

Source:

Rabbit

Isotype:

IgG

Immunogen Catalog Number:

AG11700

GenBank Accession Number:

BC021285

GeneID (NCBI):

4487

UNIPROT ID:

P28360

Full Name:

msh homeobox 1

Calculated MW:

303 aa, 32 kDa

Observed MW:

32 kDa

Purification Method:

Antigen affinity purification

Recommended Dilutions:

WB 1:500-1:2000

Applications

Tested Applications:

WB, ELISA

Cited Applications:

WB

Species Specificity:

human, mouse, rat

Cited Species:

human, mouse

Positive Controls:

WB : mouse skeletal muscle tissue, rat skeletal muscle tissue

Background Information

MSX1, also known as, Homeobox protein Hox-7 or Msh homeobox 1-like protein, is a 303 amino acid protein, which plays an important role during embryogenesis. Msx1 was the first mammalian member of the Msx subfamily of homeobox genes that was described, and it was isolated from a cDNA library prepared from mouse 8.5-day embryos. Expression of Msx1 has been described during embryogenesis of limb buds, genital ridges, visceral arches, craniofacial structures, central nervous system, and the developing pituitary gland. Msx1 expression in adult mouse uterus and mammary gland has also been reported recently. (PMID: 9369446). MSX1 displays homology to the Drosophila muscle segment homeobox (msh) gene, which is important in development. MSX1 encodes important genes that regulate numerous morphogenic events, such as tooth formation, bone development, development of the central nervous system, and the development and proliferation of various cell types (PMID: 18379900).

Notable Publications

Author	Pubmed ID	Journal	Application
Huizhe Wu	35173309	Oncogene	WB
Meng-Han Zhang	39758702	Stem Cells Int	WB

Storage

Storage:

Store at -20°C. Stable for one year after shipment.

Storage Buffer:

PBS with 0.02% sodium azide and 50% glycerol pH 7.3.

Aliquoting is unnecessary for -20°C storage

*** 20ul sizes contain 0.1% BSA

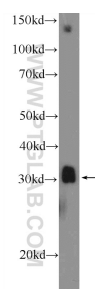
For technical support and original validation data for this product please contact:

T: 1 (888) 4PTGLAB (1-888-478-4522) (toll free in USA), or 1(312) 455-8498 (outside USA)

E: proteintech@ptglab.com
W: ptglab.com

This product is exclusively available under Proteintech Group brand and is not available to purchase from any other manufacturer.

Selected Validation Data



mouse skeletal muscle tissue were subjected to SDS PAGE followed by western blot with 17678-1-AP (MSX1 Antibody) at dilution of 1:1000 incubated at room temperature for 1.5 hours.