

For Research Use Only

# REV1 Polyclonal antibody

Catalog Number: 17703-1-AP



## Basic Information

**Catalog Number:**

17703-1-AP

**Size:**

150ul , Concentration: 600 ug/ml by Nanodrop and 440 ug/ml by Bradford method using BSA as the standard;

**Source:**

Rabbit

**Isotype:**

IgG

**Immunogen Catalog Number:**

AG11975

**GenBank Accession Number:**

BC037734

**GeneID (NCBI):**

51455

**UNIPROT ID:**

Q9UBZ9

**Full Name:**

REV1 homolog (S. cerevisiae)

**Calculated MW:**

1114 aa, 122 kDa

**Observed MW:**

140-150 kDa

**Purification Method:**

Antigen affinity purification

**Recommended Dilutions:**

WB 1:500-1:2000

IF/ICC 1:50-1:500

## Applications

**Tested Applications:**

WB, IF/ICC, ELISA

**Species Specificity:**

human, mouse, rat

**Positive Controls:**

WB : HeLa cells,

IF/ICC : U2OS cells,

## Background Information

Rev1 is a member of the TLS polymerase family and plays a key role in this mutagenic pathway, which allows the bypass of modified DNA bases and respectively, facilitates proliferation even in the presence of extensive DNA damage, such as during chemotherapy. Mutations in human REV1 have been detected in a minority of tumors, and single-nucleotide polymorphisms (SNPs) in the hREV1 gene have been linked to various types of human cancer.

## Storage

**Storage:**

Store at -20°C. Stable for one year after shipment.

**Storage Buffer:**

PBS with 0.02% sodium azide and 50% glycerol pH 7.3.

Aliquoting is unnecessary for -20°C storage

\*\*\* 20ul sizes contain 0.1% BSA

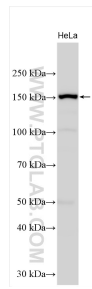
For technical support and original validation data for this product please contact:

T: 1 (888) 4PTGLAB (1-888-478-4522) (toll free in USA), or 1(312) 455-8498 (outside USA)

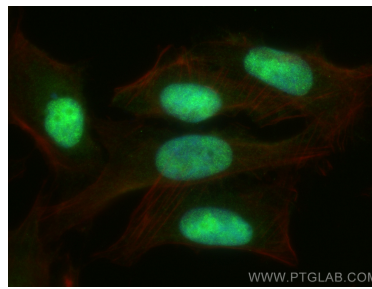
E: [proteintech@ptglab.com](mailto:proteintech@ptglab.com)  
W: [ptglab.com](http://ptglab.com)

This product is exclusively available under Proteintech Group brand and is not available to purchase from any other manufacturer.

## Selected Validation Data



HeLa cells were subjected to SDS PAGE followed by western blot with 17703-1-AP (REV1 antibody) at dilution of 1:1000 incubated at room temperature for 1.5 hours.



Immunofluorescent analysis of (4% PFA) fixed U2OS cells using REV1 antibody (17703-1-AP) at dilution of 1:200 and CoraLite®488-Conjugated Goat Anti-Rabbit IgG(H+L), CL594-phalloidin (red).