

For Research Use Only

EB1 Polyclonal antibody

Catalog Number: 17717-1-AP

Featured Product

5 Publications



Basic Information

Catalog Number:

17717-1-AP

Size:

150ul, Concentration: 350 ug/ml by Nanodrop and 247 ug/ml by Bradford method using BSA as the standard;

Source:

Rabbit

Isotype:

IgG

Immunogen Catalog Number:

AG12092

GenBank Accession Number:

BC106068

GeneID (NCBI):

22919

UNIPROT ID:

Q15691

Full Name:

microtubule-associated protein, RP/EB family, member 1

Calculated MW:

268 aa, 30 kDa

Observed MW:

35 kDa

Purification Method:

Antigen affinity purification

Recommended Dilutions:

WB 1:500-1:3000

IP 0.5-4.0 ug for 1.0-3.0 mg of total protein lysate

IHC 1:100-1:400

IF/ICC 1:200-1:800

Applications

Tested Applications:

WB, IHC, IF/ICC, FC (Intra), IP, ELISA

Cited Applications:

IF

Species Specificity:

human, mouse

Cited Species:

human, mouse

Note-IHC: suggested antigen retrieval with TE buffer pH 9.0; (*) Alternatively, antigen retrieval may be performed with citrate buffer pH 6.0

Positive Controls:

WB: HeLa cells, Jurkat cells, A431 cells

IP: HeLa cells, Caco-2 cells, mouse thymus tissue

IHC: human kidney tissue, human placenta tissue, human testis tissue, human skin tissue, human spleen tissue, human lung tissue, human normal colon, human colon cancer tissue

IF/ICC: HeLa cells,

Notable Publications

Author	Pubmed ID	Journal	Application
Peihong Su	32139394	Biol Open	IF
Peihong Su	34004757	Biol Open	IF
Dandan Ma	35119360	Elife	IF

Storage

Storage:

Store at -20°C. Stable for one year after shipment.

Storage Buffer:

PBS with 0.02% sodium azide and 50% glycerol pH 7.3.

Aliquoting is unnecessary for -20°C storage

*** 20ul sizes contain 0.1% BSA

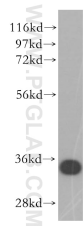
For technical support and original validation data for this product please contact:

T: 1 (888) 4PTGLAB (1-888-478-4522) (toll free in USA), or 1(312) 455-8498 (outside USA)

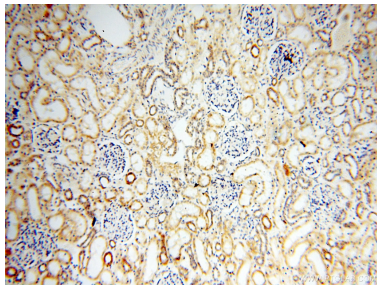
E: proteintech@ptglab.com
W: ptglab.com

This product is exclusively available under Proteintech Group brand and is not available to purchase from any other manufacturer.

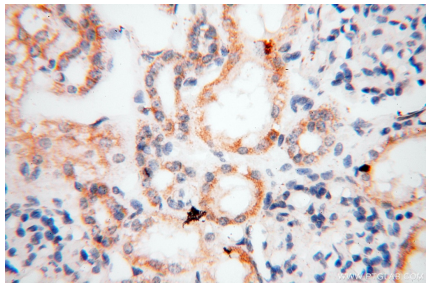
Selected Validation Data



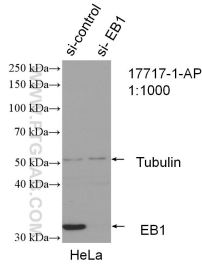
HeLa cells were subjected to SDS PAGE followed by western blot with 17717-1-AP (MAPRE1 antibody) at dilution of 1:500 incubated at room temperature for 1.5 hours.



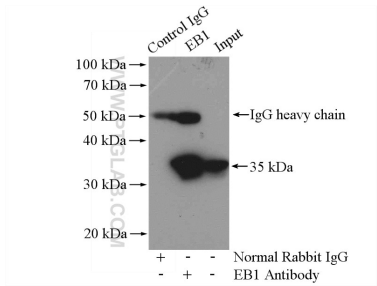
Immunohistochemical analysis of paraffin-embedded human kidney using 17717-1-AP (MAPRE1 antibody) at dilution of 1:100 (under 10x lens).



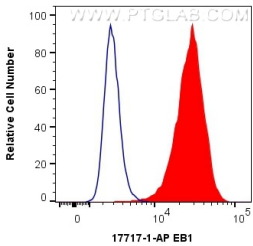
Immunohistochemical analysis of paraffin-embedded human kidney using 17717-1-AP (MAPRE1 antibody) at dilution of 1:100 (under 40x lens).



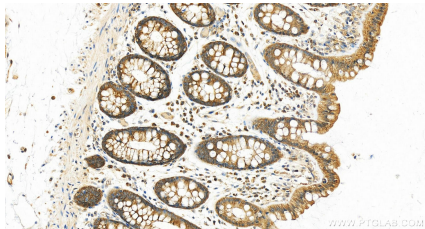
WB result of EB1 antibody (17717-1-AP; 1:1000; incubated at room temperature for 1.5 hours) with si-Control and sh-EB1 transfected HeLa cells.



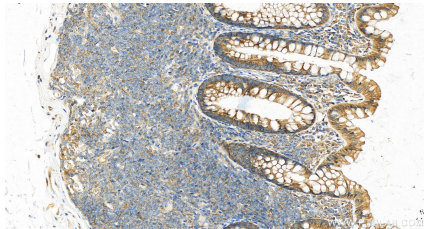
IP result of anti-EB1 (IP:17717-1-AP, 4ug; Detection:17717-1-AP 1:1000) with HeLa cells lysate 1200ug.



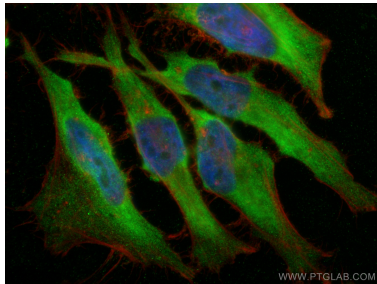
1X10⁶ HeLa cells were intracellularly stained with 0.4 ug Anti-Human EB1 (17717-1-AP) and CoraLite®488-Conjugated AffiniPure Goat Anti-Rabbit IgG(H+L) at dilution 1:1000 (red), or 0.4 ug Control Antibody. Cells were fixed with 4% PFA and permeabilized with Flow Cytometry Perm Buffer (PF00011-C).



Immunohistochemical analysis of paraffin-embedded human normal colon slide using 17717-1-AP (EB1 antibody) at dilution of 1:300 (under 20x lens). Heat mediated antigen retrieval with Tris-EDTA buffer (pH 9.0).



Immunohistochemical analysis of paraffin-embedded human normal colon slide using 17717-1-AP (EB1 antibody) at dilution of 1:300 (under 20x lens). Heat mediated antigen retrieval with Tris-EDTA buffer (pH 9.0).



Immunofluorescent analysis of (4% PFA) fixed HeLa cells using EB1 antibody (17717-1-AP) at dilution of 1:400 and CoraLite®488-Conjugated AffiniPure Goat Anti-Rabbit IgG(H+L), CL594-Phalloidin (red).