

For Research Use Only

METTL4 Polyclonal antibody, PBS Only

Catalog Number:17718-1-PBS



Basic Information

Catalog Number:

17718-1-PBS

Size:

100ug, Concentration: 1 mg/ml by Nanodrop;

Source:

Rabbit

Isotype:

IgG

Immunogen Catalog Number:

AG12093

GenBank Accession Number:

BC111020

GeneID (NCBI):

64863

UNIPROT ID:

Q8N3J2

Full Name:

methyltransferase like 4

Calculated MW:

472 aa, 54 kDa

Purification Method:

Antigen affinity purification

Applications

Tested Applications:

WB, Indirect ELISA

Species Specificity:

human, mouse, rat

Background Information

Methyltransferase like protein 4 (METTL4) is a internal m6Am methyltransferase, which mediates N6-methylation of Am30 on U2 snRNA in the context of an AAG motif in vivo and in vitro. METTL4 belongs to the MT-A70-like family, and like its paralogs METTL3/14, METTL4 is conserved from yeast to human.

Storage

Storage:

Store at -80°C.

Storage Buffer:

PBS only, pH7.3

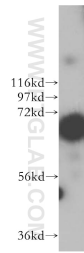
For technical support and original validation data for this product please contact:

T: 1 (888) 4PTGLAB (1-888-478-4522) (toll free in USA), or 1(312) 455-8498 (outside USA)

E: proteintech@ptglab.com
W: ptglab.com

This product is exclusively available under Proteintech Group brand and is not available to purchase from any other manufacturer.

Selected Validation Data



MCF7 cells were subjected to SDS PAGE followed by western blot with 17718-1-AP (METTL4 antibody) at dilution of 1:500 incubated at room temperature for 1.5 hours. This data was developed using the same antibody clone with 17718-1-PBS in a different storage buffer formulation.