

For Research Use Only

SMARCC1 Polyclonal antibody

Catalog Number: 17722-1-AP **3 Publications**



Basic Information

Catalog Number: 17722-1-AP	GenBank Accession Number: BC050564	Purification Method: Antigen affinity purification
Size: 150ul , Concentration: 600 µg/ml by Nanodrop and 300 µg/ml by Bradford method using BSA as the standard;	GeneID (NCBI): 6599	Recommended Dilutions: WB 1:2000-1:16000 IP 0.5-4.0 ug for IP and 1:500-1:1000 for WB
Source: Rabbit	Full Name: SWI/SNF related, matrix associated, actin dependent regulator of chromatin, subfamily c, member 1	IHC 1:20-1:200
Isotype: IgG	Calculated MW: 1105 aa, 123 kDa	
Immunogen Catalog Number: AG12109	Observed MW: 155-160 kDa	

Applications

Tested Applications: IHC, IP, WB, ELISA	Positive Controls:
Cited Applications: CoIP, IP, WB	WB : K-562 cells, Jurkat cells, rat brain tissue, rat testis tissue
Species Specificity: human, mouse, rat	IP : mouse brain tissue,
Cited Species: human, mouse	IHC : human kidney tissue, human brain tissue, human ovary tissue, human placenta tissue, human testis tissue
Note-IHC: suggested antigen retrieval with TE buffer pH 9.0; (*) Alternatively, antigen retrieval may be performed with citrate buffer pH 6.0	

Background Information

SMARCC1, also named as SWI/SNF complex 155 kDa subunit or BAF 155, is a 1105 amino acid protein, which belongs to the SMARCC family. SMARCC1 is expressed in brain, heart, muscle, placenta, lung, liver, muscle, kidney and pancreas. SMARCC1 is involved in transcriptional activation and repression of select genes by chromatin remodeling. SMARCC1 may stimulate the ATPase activity of the catalytic subunit of the complex. SMARCC1 belongs to the neural progenitors-specific chromatin remodeling complex (npBAF complex) and the neuron-specific chromatin remodeling complex (nBAF complex). The calculated molecular weight of TCEA1 is 123 kDa, but modified SMARCC1 is about 155-160 kDa. (PMID: 24025402)

Notable Publications

Author	Pubmed ID	Journal	Application
Xu Zhu	32459350	Nucleic Acids Res	CoIP
David McClellan	30988160	Mol Cell Biol	
Jinxiu Li	34078620	Cancer Discov	WB,IP

Storage

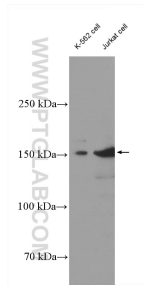
Storage:
Store at -20°C. Stable for one year after shipment.
Storage Buffer:
PBS with 0.02% sodium azide and 50% glycerol pH 7.3.
Aliquoting is unnecessary for -20°C storage

*** 20ul sizes contain 0.1% BSA

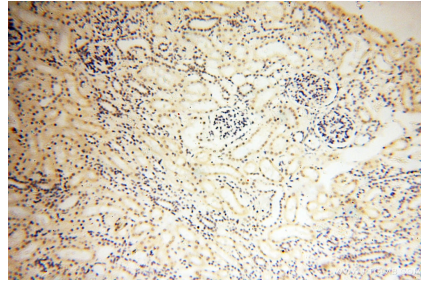
For technical support and original validation data for this product please contact:
T: 1 (888) 4PTGLAB (1-888-478-4522) (toll free in USA), or 1(312) 455-8498 (outside USA)
E: proteintech@ptglab.com
W: ptglab.com

This product is exclusively available under Proteintech Group brand and is not available to purchase from any other manufacturer.

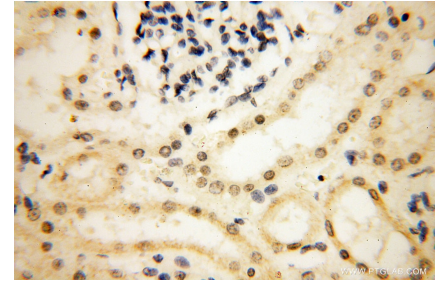
Selected Validation Data



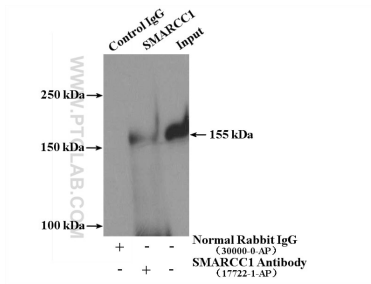
Various lysates were subjected to SDS PAGE followed by western blot with 17722-1-AP (SMARCC1 antibody) at dilution of 1:8000 incubated at room temperature for 1.5 hours.



Immunohistochemical analysis of paraffin-embedded human kidney using 17722-1-AP (SMARCC1 antibody) at dilution of 1:100 (under 10x lens).



Immunohistochemical analysis of paraffin-embedded human kidney using 17722-1-AP (SMARCC1 antibody) at dilution of 1:100 (under 40x lens).



IP Result of anti-SMARCC1 (IP:17722-1-AP, 4ug; Detection:17722-1-AP 1:600) with mouse brain tissue lysate 4000ug.