

For Research Use Only

ENOPH1 Polyclonal antibody

Catalog Number: 17731-1-AP **1 Publications**



Basic Information

| | | |
|---|--|---|
| Catalog Number: 17731-1-AP | GenBank Accession Number: BC065815 | Purification Method: Antigen affinity purification |
| Size: 150ul, Concentration: 260 µg/ml by Nanodrop and 133 µg/ml by Bradford method using BSA as the standard; | GeneID (NCBI): 58478 | Recommended Dilutions: WB 1:500-1:3000 IHC 1:50-1:500 IF 1:50-1:500 |
| Source: Rabbit | Full Name: enolase-phosphatase 1 | |
| Isotype: IgG | Calculated MW: 261 aa, 29 kDa | |
| Immunogen Catalog Number: AG12131 | Observed MW: 29-35 kDa | |

Applications

| | |
|---|--|
| Tested Applications: IF, IHC, WB, ELISA | Positive Controls: WB : HL-60 cells, K-562 cells, L02 cells, mouse liver tissue, rat liver tissue IHC : human liver cancer tissue, human colon cancer tissue IF : U-251 cells, |
| Cited Applications: WB | |
| Species Specificity: human, mouse, rat | |
| Cited Species: mouse | |

Note-IHC: suggested antigen retrieval with TE buffer pH 9.0; (*) Alternatively, antigen retrieval may be performed with citrate buffer pH 6.0

Background Information

ENOPH1, also named as MASA and MSTP145, belongs to the HAD-like hydrolase superfamily and MasA/MtnC family. ENOPH1 is a newly identified enzyme involved in L-methionine biosynthesis, which is associated with anxiety and depression. Studies have shown that ENOPH1 plays a crucial role in promoting the proliferation and migration of glioma cells (PMID: 32654229). ENOPH1 has 2 isoforms with the molecular mass of 13 and 29 kDa.

Notable Publications

| Author | Pubmed ID | Journal | Application |
|------------|-----------|------------|-------------|
| Dexin Yang | 37075968 | Exp Neurol | WB |

Storage

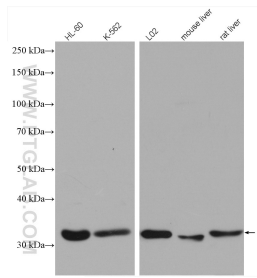
Storage:
Store at -20°C. Stable for one year after shipment.
Storage Buffer:
PBS with 0.02% sodium azide and 50% glycerol pH 7.3.
Aliquoting is unnecessary for -20°C storage

***** 20ul sizes contain 0.1%BSA**

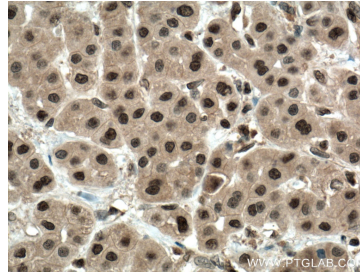
For technical support and original validation data for this product please contact:
T: 1 (888) 4PTGLAB (1-888-478-4522) (toll free in USA), or 1(312) 455-8498 (outside USA)
E: proteintech@ptglab.com
W: ptglab.com

This product is exclusively available under Proteintech Group brand and is not available to purchase from any other manufacturer.

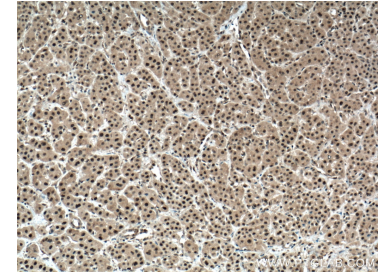
Selected Validation Data



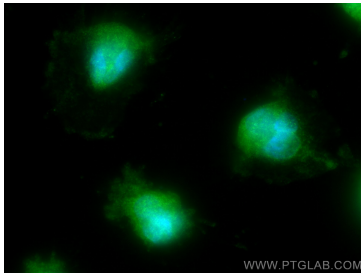
Various lysates were subjected to SDS PAGE followed by western blot with 17731-1-AP (ENOPH1 antibody) at dilution of 1:1500 incubated at room temperature for 1.5 hours.



Immunohistochemical analysis of paraffin-embedded human liver cancer tissue slide using 17731-1-AP (ENOPH1 antibody) at dilution of 1:200 (under 40x lens. Heat mediated antigen retrieval with Tris-EDTA buffer (pH 9.0).



Immunohistochemical analysis of paraffin-embedded human liver cancer tissue slide using 17731-1-AP (ENOPH1 antibody) at dilution of 1:200 (under 10x lens. Heat mediated antigen retrieval with Tris-EDTA buffer (pH 9.0).



Immunofluorescent analysis of (-20°C Methanol) fixed U-251 cells using ENOPH1 antibody (17731-1-AP) at dilution of 1:200 and CoraLite®488-Conjugated AffiniPure Goat Anti-Rabbit IgG(H+L).