

For Research Use Only

SPOPL Polyclonal antibody

Catalog Number: 17740-1-AP



Basic Information

Catalog Number:

17740-1-AP

Size:

150ul , Concentration: 240 ug/ml by Nanodrop;

Source:

Rabbit

Isotype:

IgG

Immunogen Catalog Number:

AG11951

GenBank Accession Number:

BC071613

GeneID (NCBI):

339745

UNIPROT ID:

Q6IQ16

Full Name:

speckle-type POZ protein-like

Calculated MW:

392 aa, 45 kDa

Observed MW:

39-45 kDa

Purification Method:

Antigen affinity purification

Recommended Dilutions:

WB 1:500-1:2000

Applications

Tested Applications:

WB, ELISA

Species Specificity:

human, mouse, rat

Positive Controls:

WB : HeLa cells, PC-3 cells

Background Information

Speckle Type POZ Protein Like (SPOPL), a member of the MATH-BTB protein family, was first identified in 2010 with 82.6% sequence homology with Speckle-type POZ protein (SPOP). SPOPL is an E3 ubiquitin ligase protein that ubiquitinates and degrades the target protein. SPOPL can be used as a potential prognostic biomarker for glioblastoma multiforme in clinical work and promotes the proliferation and stemness of glioma stem cells by activating the Notch signaling pathway (PMID:37523046).

Storage

Storage:

Store at -20°C. Stable for one year after shipment.

Storage Buffer:

PBS with 0.02% sodium azide and 50% glycerol pH 7.3.

Aliquoting is unnecessary for -20°C storage

*** 20ul sizes contain 0.1% BSA

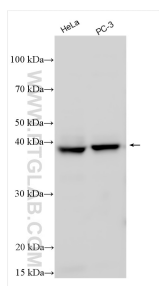
For technical support and original validation data for this product please contact:

T: 1 (888) 4PTGLAB (1-888-478-4522) (toll free in USA), or 1(312) 455-8498 (outside USA)

E: proteintech@ptglab.com
W: ptglab.com

This product is exclusively available under Proteintech Group brand and is not available to purchase from any other manufacturer.

Selected Validation Data



Various lysates were subjected to SDS PAGE followed by western blot with 17740-1-AP (SPOPL antibody) at dilution of 1:1000 incubated at room temperature for 1.5 hours.