

For Research Use Only

# SPOPL Polyclonal antibody, PBS Only

Catalog Number:17740-1-PBS



## Basic Information

Catalog Number:

17740-1-PBS

Size:

100ug , Concentration: 1 mg/ml by Nanodrop;

Source:

Rabbit

Isotype:

IgG

Immunogen Catalog Number:

AG11951

GenBank Accession Number:

BC071613

GeneID (NCBI):

339745

UNIPROT ID:

Q6IQ16

Full Name:

speckle-type POZ protein-like

Calculated MW:

392 aa, 45 kDa

Observed MW:

39-45 kDa

Purification Method:

Antigen affinity purification

## Applications

Tested Applications:

WB, Indirect ELISA

Species Specificity:

human

## Background Information

Speckle Type POZ Protein Like (SPOPL), a member of the MATH-BTB protein family, was first identified in 2010 with 82.6% sequence homology with Speckle-type POZ protein (SPOP). SPOPL is an E3 ubiquitin ligase protein that ubiquitinates and degrades the target protein. SPOPL can be used as a potential prognostic biomarker for glioblastoma multiforme in clinical work and promotes the proliferation and stemness of glioma stem cells by activating the Notch signaling pathway (PMID:37523046).

## Storage

Storage:

Store at -80°C.

Storage Buffer:

PBS only, pH7.3

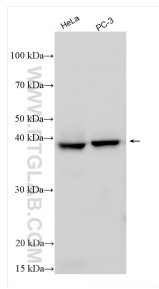
For technical support and original validation data for this product please contact:

T: 1 (888) 4PTGLAB (1-888-478-4522) (toll free in USA), or 1(312) 455-8498 (outside USA)

E: [proteintech@ptglab.com](mailto:proteintech@ptglab.com)  
W: [ptglab.com](http://ptglab.com)

**This product is exclusively available under Proteintech Group brand and is not available to purchase from any other manufacturer.**

## Selected Validation Data



Various lysates were subjected to SDS PAGE followed by western blot with 17740-1-AP (SPOPL antibody) at dilution of 1:1000 incubated at room temperature for 1.5 hours. This data was developed using the same antibody clone with 17740-1-PBS in a different storage buffer formulation.