

For Research Use Only

# YPEL1 Polyclonal antibody

Catalog Number: 17743-1-AP

Featured Product

1 Publications



## Basic Information

### Catalog Number:

17743-1-AP

### Size:

150ul, Concentration: 350 ug/ml by Nanodrop and 233 ug/ml by Bradford method using BSA as the standard;

### Source:

Rabbit

### Isotype:

IgG

### Immunogen Catalog Number:

AG11993

### GenBank Accession Number:

BC074501

### GeneID (NCBI):

29799

### UNIPROT ID:

O60688

### Full Name:

yippee-Like 1 (Drosophila)

### Calculated MW:

119 aa, 14 kDa

### Observed MW:

20-23 kDa

### Purification Method:

Antigen affinity purification

### Recommended Dilutions:

WB 1:500-1:1000

IHC 1:20-1:200

## Applications

### Tested Applications:

WB, IHC, ELISA

### Cited Applications:

WB

### Species Specificity:

human, mouse, rat

### Cited Species:

human

**Note-IHC: suggested antigen retrieval with TE buffer pH 9.0; (\*) Alternatively, antigen retrieval may be performed with citrate buffer pH 6.0**

### Positive Controls:

WB : human brain tissue, human liver tissue, human testis tissue

IHC : human brain tissue,

## Notable Publications

Author	Pubmed ID	Journal	Application
Lei Wang	35674183	Oncol Rep	WB

## Storage

### Storage:

Store at -20°C. Stable for one year after shipment.

### Storage Buffer:

PBS with 0.02% sodium azide and 50% glycerol pH 7.3.

Aliquoting is unnecessary for -20°C storage

\*\*\* 20ul sizes contain 0.1% BSA

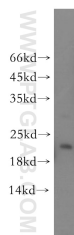
For technical support and original validation data for this product please contact:

T: 1 (888) 4PTGLAB (1-888-478-4522) (toll free in USA), or 1(312) 455-8498 (outside USA)

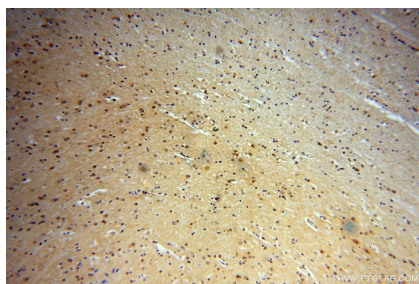
E: [proteintech@ptglab.com](mailto:proteintech@ptglab.com)  
W: [ptglab.com](http://ptglab.com)

This product is exclusively available under Proteintech Group brand and is not available to purchase from any other manufacturer.

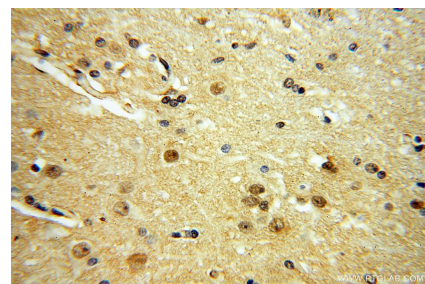
## Selected Validation Data



human brain tissue were subjected to SDS PAGE followed by western blot with 17743-1-AP (YPEL1 antibody) at dilution of 1:400 incubated at room temperature for 1.5 hours.



Immunohistochemical analysis of paraffin-embedded human brain using 17743-1-AP (YPEL1 antibody) at dilution of 1:400 (under 10x lens).



Immunohistochemical analysis of paraffin-embedded human brain using 17743-1-AP (YPEL1 antibody) at dilution of 1:400 (under 40x lens).