

For Research Use Only

GRPEL2 Polyclonal antibody

Catalog Number: 17751-1-AP

2 Publications



Basic Information

Catalog Number:

17751-1-AP

Size:

150ul, Concentration: 300 ug/ml by Nanodrop and 227 ug/ml by Bradford method using BSA as the standard;

Source:

Rabbit

Isotype:

IgG

Immunogen Catalog Number:

AG12018

GenBank Accession Number:

BC070090

GeneID (NCBI):

134266

UNIPROT ID:

Q8TAA5

Full Name:

GrpE-like 2, mitochondrial (E. coli)

Calculated MW:

225 aa, 25 kDa

Observed MW:

25 kDa

Purification Method:

Antigen affinity purification

Recommended Dilutions:

WB 1:500-1:3000

Applications

Tested Applications:

WB, ELISA

Cited Applications:

WB

Species Specificity:

human, mouse, rat

Cited Species:

human

Positive Controls:

WB: mouse liver tissue,

Notable Publications

Author	Pubmed ID	Journal	Application
Ming-Chun Lai	34659882	Am J Cancer Res	WB
Jasmin Adriana Schafer	34847359	Mol Cell	WB

Storage

Storage:

Store at -20°C. Stable for one year after shipment.

Storage Buffer:

PBS with 0.02% sodium azide and 50% glycerol pH 7.3.

Aliquoting is unnecessary for -20°C storage

*** 20ul sizes contain 0.1% BSA

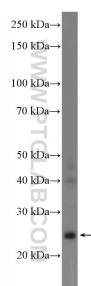
For technical support and original validation data for this product please contact:

T: 1 (888) 4PTGLAB (1-888-478-4522) (toll free in USA), or 1(312) 455-8498 (outside USA)

E: proteintech@ptglab.com
W: ptglab.com

This product is exclusively available under Proteintech Group brand and is not available to purchase from any other manufacturer.

Selected Validation Data



Mitochondrial proteins from mouse liver tissue were subjected to SDS PAGE followed by western blot with 17751-1-AP (GRPEL2 Antibody) at dilution of 1:1500 incubated at room temperature for 1.5 hours.