

For Research Use Only

# SOHLH1 Polyclonal antibody

Catalog Number: 17753-1-AP

1 Publications



## Basic Information

Catalog Number:

17753-1-AP

Size:

150ul, Concentration: 600 ug/ml by Nanodrop and 287 ug/ml by Bradford method using BSA as the standard;

Source:

Rabbit

Isotype:

IgG

Immunogen Catalog Number:

AG12107

GenBank Accession Number:

BC031861

GeneID (NCBI):

402381

UNIPROT ID:

Q5JUK2

Full Name:

spermatogenesis and oogenesis specific basic helix-loop-helix 1

Calculated MW:

328 aa, 34 kDa

Purification Method:

Antigen affinity purification

Recommended Dilutions:

IHC 1:50-1:500

## Applications

Tested Applications:

IHC, ELISA

Cited Applications:

WB, IF

Species Specificity:

human

Cited Species:

human

Positive Controls:

IHC : human testis tissue,

**Note-IHC: suggested antigen retrieval with TE buffer pH 9.0; (\*) Alternatively, antigen retrieval may be performed with citrate buffer pH 6.0**

## Background Information

Spermatogenesis-and oogenesis-specific helix-loop-helix transcription factor 1 (SOHLH1) is a gonad-specific transcription factor that belongs to the basic-helix-loop-helix (bHLH) transcription factor family. SOHLH1 has a profound effect on the development of germ cells, from SSC self-maintenance to spermatogonium differentiation.

## Notable Publications

Author	Pubmed ID	Journal	Application
Mohan Liu	34448846	Hum Mol Genet	WB, IF

## Storage

Storage:

Store at -20°C. Stable for one year after shipment.

Storage Buffer:

PBS with 0.02% sodium azide and 50% glycerol pH 7.3.

Aliquoting is unnecessary for -20°C storage

\*\*\* 20ul sizes contain 0.1% BSA

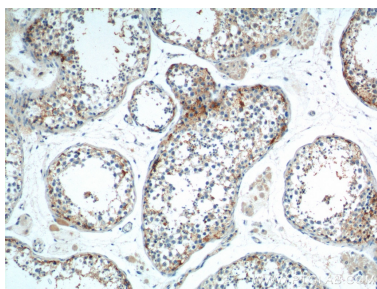
For technical support and original validation data for this product please contact:

T: 1 (888) 4PTGLAB (1-888-478-4522) (toll free in USA), or 1(312) 455-8498 (outside USA)

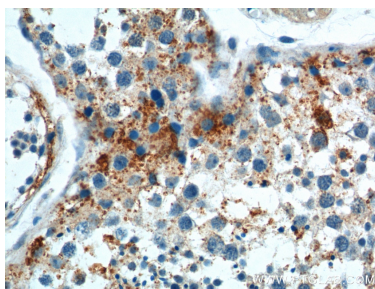
E: [proteintech@ptglab.com](mailto:proteintech@ptglab.com)  
W: [ptglab.com](http://ptglab.com)

This product is exclusively available under Proteintech Group brand and is not available to purchase from any other manufacturer.

## Selected Validation Data



Immunohistochemical analysis of paraffin-embedded human testis tissue slide using 17753-1-AP (SOHLH1 Antibody) at dilution of 1:100 (under 10x lens).



Immunohistochemical analysis of paraffin-embedded human testis tissue slide using 17753-1-AP (SOHLH1 Antibody) at dilution of 1:100 (under 40x lens).