

For Research Use Only

CORO1A Polyclonal antibody

Catalog Number: 17760-1-AP

4 Publications



Basic Information

Catalog Number:

17760-1-AP

Size:

150ul, Concentration: 350 µg/ml by Nanodrop and 220 µg/ml by Bradford method using BSA as the standard;

Source:

Rabbit

Isotype:

IgG

Immunogen Catalog Number:

AG12139

GenBank Accession Number:

BC110374

GeneID (NCBI):

11151

Full Name:

coronin, actin binding protein, 1A

Calculated MW:

461 aa, 51 kDa

Observed MW:

57 kDa

Purification Method:

Antigen affinity purification

Recommended Dilutions:

WB 1:500-1:1000

IP 0.5-4.0 µg for IP and 1:500-1:2000 for WB

IHC 1:500-1:2000

IF 1:50-1:500

Applications

Tested Applications:

FC, IF, IHC, IP, WB, ELISA

Cited Applications:

WB

Species Specificity:

human, mouse, rat

Cited Species:

human, rat

Note-IHC: suggested antigen retrieval with TE buffer pH 9.0; (*) Alternatively, antigen retrieval may be performed with citrate buffer pH 6.0

Positive Controls:

WB: rat brain tissue, Jurkat cells, HL-60 cells, rat spleen tissue, mouse spleen tissue

IP: mouse spleen tissue,

IHC: rat spleen tissue, mouse spleen tissue

IF: mouse spleen tissue, mouse colon tissue

Background Information

Notable Publications

Author	Pubmed ID	Journal	Application
Feng Guo	25302788	PLoS One	WB
Fuli Min	35526384	Int Immunopharmacol	WB
Hui Song	34926519	Front Med (Lausanne)	WB

Storage

Storage:

Store at -20°C. Stable for one year after shipment.

Storage Buffer:

PBS with 0.02% sodium azide and 50% glycerol pH 7.3.

Aliquoting is unnecessary for -20°C storage

*** 20ul sizes contain 0.1% BSA

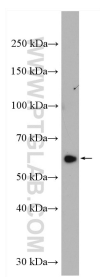
For technical support and original validation data for this product please contact:

T: 1 (888) 4PTGLAB (1-888-478-4522) (toll free in USA), or 1(312) 455-8498 (outside USA)

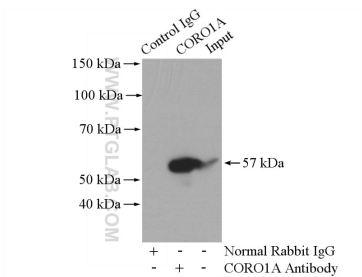
E: proteintech@ptglab.com
W: ptglab.com

This product is exclusively available under Proteintech Group brand and is not available to purchase from any other manufacturer.

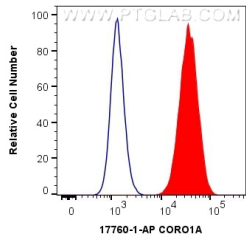
Selected Validation Data



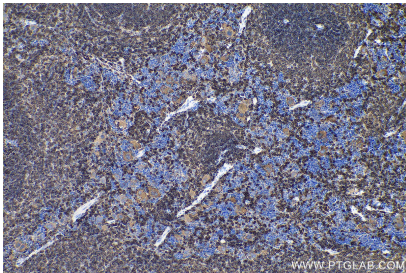
rat brain tissue were subjected to SDS PAGE followed by western blot with 17760-1-AP (CORO1A antibody) at dilution of 1:500 incubated at room temperature for 1.5 hours.



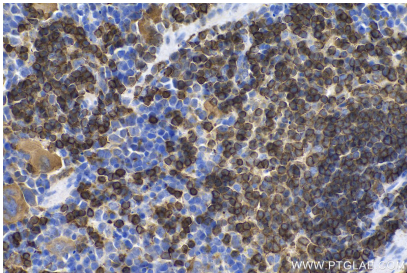
IP Result of anti-CORO1A (IP:17760-1-AP, 4ug; Detection:17760-1-AP 1:1000) with mouse spleen tissue lysate 4800ug.



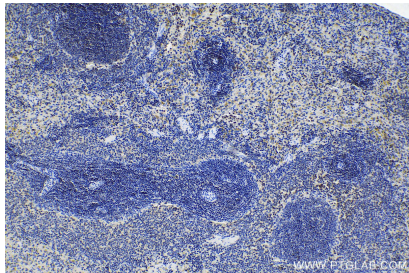
1X10⁶ Jurkat cells were intracellularly stained with 0.4 ug Anti-Human CORO1A (17760-1-AP) and CoraLite®488-Conjugated AffiniPure Goat Anti-Rabbit IgG(H+L) at dilution 1:1000 (red), or 0.4 ug Isotype Control. Cells were fixed with 4% PFA and permeabilized with Flow Cytometry Perm Buffer (PF00011-C).



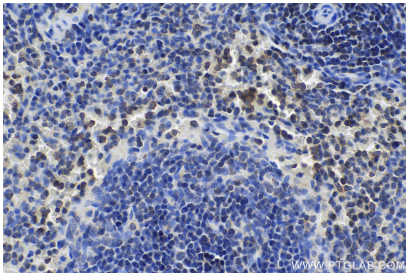
Immunohistochemical analysis of paraffin-embedded mouse spleen tissue slide using 17760-1-AP (CORO1A antibody) at dilution of 1:1000 (under 10x lens). Heat mediated antigen retrieval with Tris-EDTA buffer (pH 9.0).



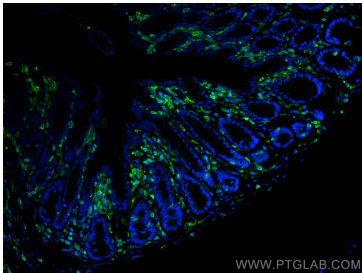
Immunohistochemical analysis of paraffin-embedded mouse spleen tissue slide using 17760-1-AP (CORO1A antibody) at dilution of 1:1000 (under 40x lens). Heat mediated antigen retrieval with Tris-EDTA buffer (pH 9.0).



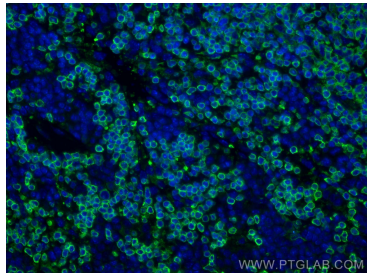
Immunohistochemical analysis of paraffin-embedded rat spleen tissue slide using 17760-1-AP (CORO1A antibody) at dilution of 1:1000 (under 10x lens). Heat mediated antigen retrieval with Tris-EDTA buffer (pH 9.0).



Immunohistochemical analysis of paraffin-embedded rat spleen tissue slide using 17760-1-AP (CORO1A antibody) at dilution of 1:1000 (under 40x lens). Heat mediated antigen retrieval with Tris-EDTA buffer (pH 9.0).



Immunofluorescent analysis of (4% PFA) fixed mouse colon tissue using CORO1A antibody (17760-1-AP) at dilution of 1:200 and CoraLite®488-Conjugated AffiniPure Goat Anti-Rabbit IgG(H+L).



Immunofluorescent analysis of (4% PFA) fixed mouse spleen tissue using CORO1A antibody (17760-1-AP) at dilution of 1:200 and CoraLite®488-Conjugated AffiniPure Goat Anti-Rabbit IgG(H+L).