

For Research Use Only

# CADM2 Polyclonal antibody, PBS Only

Catalog Number:17773-1-PBS



## Basic Information

<b>Catalog Number:</b> 17773-1-PBS	<b>GenBank Accession Number:</b> BC105999	<b>Purification Method:</b> Antigen affinity purification
<b>Size:</b> 100ug , Concentration: 1 mg/ml by Nanodrop;	<b>GeneID (NCBI):</b> 253559	
<b>Source:</b> Rabbit	<b>UNIPROT ID:</b> Q8N3J6	
<b>Isotype:</b> IgG	<b>Full Name:</b> cell adhesion molecule 2	
<b>Immunogen Catalog Number:</b> AG12191	<b>Calculated MW:</b> 404 aa, 44 kDa	
	<b>Observed MW:</b> 50-60 kDa	

## Applications

**Tested Applications:**  
WB, IHC, Indirect ELISA

**Species Specificity:**  
human, mouse, rat

## Background Information

CADM2, also known as IGSF4D, NECL3, SYNCAM2, is a member of the synaptic cell adhesion molecule 1 (SynCAM) family which belongs to the immunoglobulin (Ig) superfamily. CADM2 is a conserved modular organization comprising three Ig domains, a single transmembrane pass and a short cytoplasmic region containing 4.1 and PDZ binding motifs. CADM2 is a plasma membrane protein that accumulates in several tissues, including those of the central and peripheral nervous system, where it localizes to myelinated axons and in ependymal cells (PMID: 16311015, 17967169). The molecular weight of the CADM2 protein is approximately 50-60 kDa, which is due to N-linked glycosylation (PMID: 17967169, 21456004).

## Storage

**Storage:**  
Store at -80°C.

**Storage Buffer:**  
PBS only, pH7.3

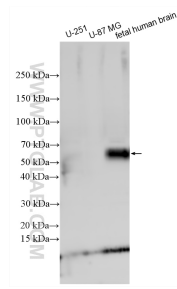
For technical support and original validation data for this product please contact:

T: 1 (888) 4PTGLAB (1-888-478-4522) (toll free in USA), or 1(312) 455-8498 (outside USA)

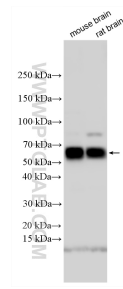
E: [proteintech@ptglab.com](mailto:proteintech@ptglab.com)  
W: [ptglab.com](http://ptglab.com)

**This product is exclusively available under Proteintech Group brand and is not available to purchase from any other manufacturer.**

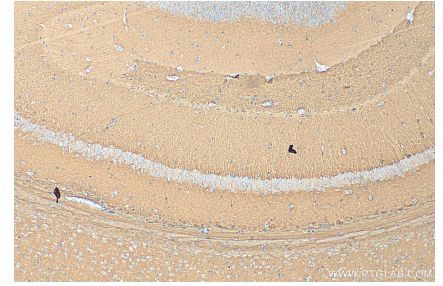
## Selected Validation Data



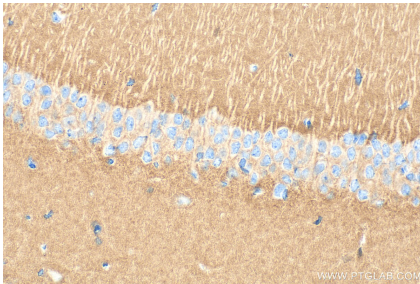
Various lysates were subjected to SDS PAGE followed by western blot with 17773-1-AP (CADM2 antibody) at dilution of 1:3000 incubated at room temperature for 1.5 hours. This data was developed using the same antibody clone with 17773-1-PBS in a different storage buffer formulation.



Various lysates were subjected to SDS PAGE followed by western blot with 17773-1-AP (CADM2 antibody) at dilution of 1:3000 incubated at room temperature for 1.5 hours. This data was developed using the same antibody clone with 17773-1-PBS in a different storage buffer formulation.



Immunohistochemical analysis of paraffin-embedded mouse brain tissue slide using 17773-1-AP (CADM2 antibody) at dilution of 1:400 (under 10x lens). Heat mediated antigen retrieval with Tris-EDTA buffer (pH 9.0). This data was developed using the same antibody clone with 17773-1-PBS in a different storage buffer formulation.



Immunohistochemical analysis of paraffin-embedded mouse brain tissue slide using 17773-1-AP (CADM2 antibody) at dilution of 1:400 (under 40x lens). Heat mediated antigen retrieval with Tris-EDTA buffer (pH 9.0). This data was developed using the same antibody clone with 17773-1-PBS in a different storage buffer formulation.