

For Research Use Only

KLHL32 Polyclonal antibody

Catalog Number: 17775-1-AP



Basic Information

Catalog Number: 17775-1-AP	GenBank Accession Number: BC071627	Purification Method: Antigen affinity purification
Size: 150ul , Concentration: 240 µg/ml by Bradford method using BSA as the standard;	GeneID (NCBI): 114792	Recommended Dilutions: IF 1:200-1:800
Source: Rabbit	Full Name: kelch-like 32 (Drosophila)	
Isotype: IgG	Calculated MW: 470 aa, 53 kDa	
Immunogen Catalog Number: AG12196		

Applications

Tested Applications: IF, ELISA	Positive Controls: IF : HeLa cells,
Species Specificity: human	

Background Information

Storage

Storage:
Store at -20°C. Stable for one year after shipment.
Storage Buffer:
PBS with 0.02% sodium azide and 50% glycerol pH 7.3.
Aliquoting is unnecessary for -20°C storage

*** 20ul sizes contain 0.1% BSA

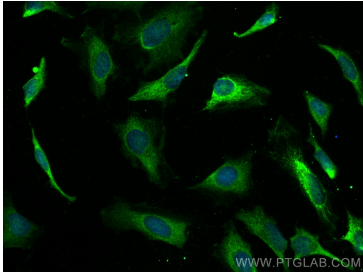
For technical support and original validation data for this product please contact:

T: 1 (888) 4PTGLAB (1-888-478-4522) (toll free in USA), or 1(312) 455-8498 (outside USA)

E: proteintech@ptglab.com
W: ptglab.com

This product is exclusively available under Proteintech Group brand and is not available to purchase from any other manufacturer.

Selected Validation Data



Immunofluorescent analysis of (-20°C Ethanol) fixed HeLa cells using KLHL32 antibody (17775-1-AP) at dilution of 1:400 and CoraLite®488-Conjugated AffiniPure Goat Anti-Rabbit IgG(H+L).