

For Research Use Only

VPS16 Polyclonal antibody

Catalog Number: 17776-1-AP

Featured Product

23 Publications



Basic Information

Catalog Number:

17776-1-AP

Size:

150ul, Concentration: 450 ug/ml by Nanodrop;

Source:

Rabbit

Isotype:

IgG

Immunogen Catalog Number:

AG12202

GenBank Accession Number:

BC073959

GeneID (NCBI):

64601

UNIPROT ID:

Q9H269

Full Name:

vacuolar protein sorting 16 homolog (S. cerevisiae)

Calculated MW:

839 aa, 95 kDa

Observed MW:

95 kDa

Purification Method:

Antigen affinity purification

Recommended Dilutions:

WB 1:500-1:2000

IP 0.5-4.0 ug for 1.0-3.0 mg of total protein lysate

IHC 1:50-1:500

Applications

Tested Applications:

WB, IP, IHC, ELISA

Cited Applications:

WB, IF, CoIP

Species Specificity:

human, mouse, rat

Cited Species:

human, mouse, rat

Note-IHC: suggested antigen retrieval with TE buffer pH 9.0; (*) Alternatively, antigen retrieval may be performed with citrate buffer pH 6.0

Positive Controls:

WB : HeLa cells, HepG2 cells, Jurkat cells, mouse liver tissue, rat liver tissue

IP : HeLa cells,

IHC : human liver tissue, human liver cancer tissue

Background Information

Vesicle mediated protein sorting plays an important role in segregation of intracellular molecules into distinct organelles. In yeast, Vps proteins are involved in the trafficking of endocytic and biosynthetic proteins to the vacuole, which functionally resembles the lysosome of higher organisms. Human VPS16 is the homolog of yeast class C Vps16 protein. VPS16 may play a role in vesicle-mediated protein trafficking to lysosomal compartments and in membrane docking/fusion reactions of late endosomes/lysosomes.

Notable Publications

Author	Pubmed ID	Journal	Application
Jingxuan Chen	36316321	Cell Death Discov	WB
Rik van der Kant	26463206	J Biol Chem	WB, IF
Qi-Xin Wen	36412210	Traffic	WB

Storage

Storage:

Store at -20°C. Stable for one year after shipment.

Storage Buffer:

PBS with 0.02% sodium azide and 50% glycerol pH 7.3.

Aliquoting is unnecessary for -20°C storage

*** 20ul sizes contain 0.1% BSA

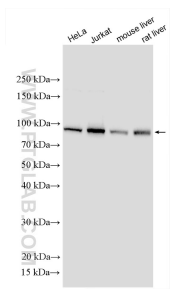
For technical support and original validation data for this product please contact:

T: 1 (888) 4PTGLAB (1-888-478-4522) (toll free in USA), or 1(312) 455-8498 (outside USA)

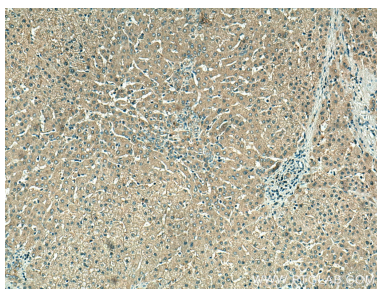
E: proteintech@ptglab.com
W: ptglab.com

This product is exclusively available under Proteintech Group brand and is not available to purchase from any other manufacturer.

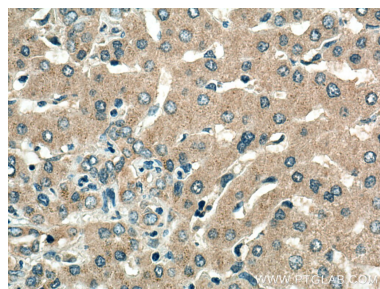
Selected Validation Data



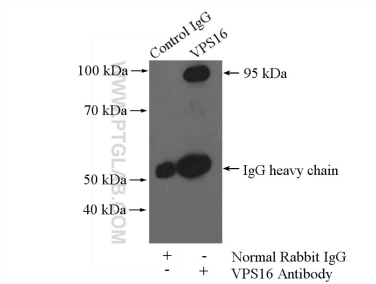
Various lysates were subjected to SDS PAGE followed by western blot with 17776-1-AP (VPS16 antibody) at dilution of 1:1500 incubated at room temperature for 1.5 hours.



Immunohistochemical analysis of paraffin-embedded human liver tissue slide using 17776-1-AP (VPS16 antibody) at dilution of 1:200 (under 10x lens). Heat mediated antigen retrieval with Tris-EDTA buffer (pH 9.0).



Immunohistochemical analysis of paraffin-embedded human liver tissue slide using 17776-1-AP (VPS16 antibody) at dilution of 1:200 (under 40x lens). Heat mediated antigen retrieval with Tris-EDTA buffer (pH 9.0).



IP result of anti-VPS16 (IP:17776-1-AP, 3ug; Detection:17776-1-AP 1:500) with HeLa cells lysate 2480ug.