

For Research Use Only

# INPP5E Polyclonal antibody

Catalog Number: 17797-1-AP

Featured Product

44 Publications



## Basic Information

### Catalog Number:

17797-1-AP

### Size:

150ul, Concentration: 550 µg/ml by Nanodrop;

### Source:

Rabbit

### Isotype:

IgG

### Immunogen Catalog Number:

AG11959

### GenBank Accession Number:

BC028032

### GeneID (NCBI):

56623

### Full Name:

inositol polyphosphate-5-phosphatase, 72 kDa

### Calculated MW:

644 aa, 70 kDa

### Observed MW:

64-66 kDa

### Purification Method:

Antigen affinity purification

### Recommended Dilutions:

WB 1:500-1:2000

IP 0.5-4.0 µg for IP and 1:500-1:2000 for WB

IHC 1:20-1:200

IF 1:20-1:200

## Applications

### Tested Applications:

IF, IHC, IP, WB, ELISA

### Cited Applications:

CoIP, IF, IHC, WB

### Species Specificity:

human, rat, mouse

### Cited Species:

human, mouse, zebrafish

### Positive Controls:

**WB**: SH-SY5Y cells, HEK-293 cells, mouse brain tissue, mouse testis tissue

**IP**: HEK-293 cells,

**IHC**: human testis tissue, human kidney tissue, human placenta tissue, human spleen tissue

**IF**: hTERT-RPE1 cells,

**Note-IHC: suggested antigen retrieval with TE buffer pH 9.0; (\*) Alternatively, antigen retrieval may be performed with citrate buffer pH 6.0**

## Background Information

INPP5E (72 kDa inositol polyphosphate 5-phosphatase) converts phosphatidylinositol 3,4,5-trisphosphate (PtdIns 3,4,5-P<sub>3</sub>) to PtdIns-P<sub>2</sub>. In mouse, highest protein expression was in brain, heart, and testis, with lower expression in thymus and lung, and very little expression in kidney, spleen, and liver (PMID:10764818). Defects in INPP5E are the cause of Joubert syndrome type 1 (JBTS1) and mental retardation-truncal obesity-retinal dystrophy-micropenis (MORMS) (PMID:19668215). It has 2 isoforms with the molecular mass of 66 kDa and 70 kDa.

## Notable Publications

Author	Pubmed ID	Journal	Application
Sumaya Alkanderi	30269812	Am J Hum Genet	IF
Dario Cilleros-Rodriguez	36063381	Elife	IF
Christin Hanke-Gogokhia	29089384	J Biol Chem	

## Storage

### Storage:

Store at -20°C. Stable for one year after shipment.

### Storage Buffer:

PBS with 0.02% sodium azide and 50% glycerol pH 7.3.

Aliquoting is unnecessary for -20°C storage

\*\*\* 20ul sizes contain 0.1% BSA

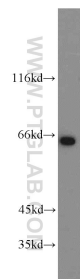
For technical support and original validation data for this product please contact:

T: 1 (888) 4PTGLAB (1-888-478-4522) (toll free in USA), or 1(312) 455-8498 (outside USA)

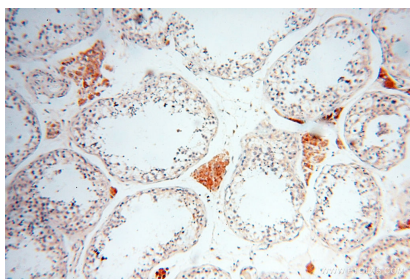
E: [proteintech@ptglab.com](mailto:proteintech@ptglab.com)  
W: [ptglab.com](http://ptglab.com)

This product is exclusively available under Proteintech Group brand and is not available to purchase from any other manufacturer.

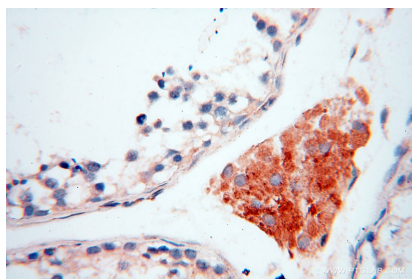
Selected Validation Data



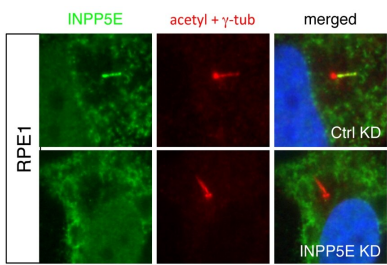
SH-SY5Y cells were subjected to SDS PAGE followed by western blot with 17797-1-AP (INPP5E antibody) at dilution of 1:1000 incubated at room temperature for 1.5 hours.



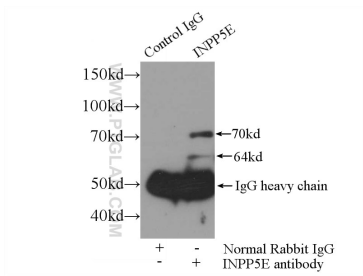
Immunohistochemical analysis of paraffin-embedded human testis using 17797-1-AP (INPP5E antibody) at dilution of 1:50 (under 10x lens).



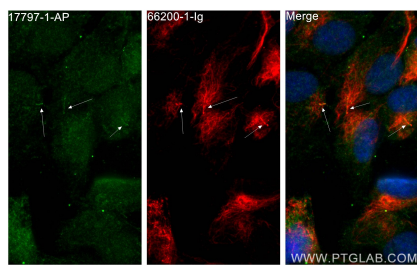
Immunohistochemical analysis of paraffin-embedded human testis using 17797-1-AP (INPP5E antibody) at dilution of 1:50 (under 40x lens).



IF result of ciliary INPP5E in human hTERT-RPE1 cell: Upper is from control siRNA transfected cells and bottom is from INPP5E siRNA transfected cells. 17797-1-AP specifically recognizes the ciliary INPP5E (From Dr.Seongjin Seo).



IP Result of anti-INPP5E (IP:17797-1-AP, 3ug; Detection:17797-1-AP 1:1000) with HEK-293 cells lysate 1000ug.



Immunofluorescent analysis of (4% PFA) fixed hTERT-RPE1 cells using INPP5E antibody (17797-1-AP) at dilution of 1:200 and CoraLite®488-Conjugated AffiniPure Goat Anti-Rabbit IgG(H+L), acetylated Tubulin(Lys40) antibody (66200-1-Ig, Clone: 7E5H8, red).