

For Research Use Only

SERP1 Polyclonal antibody, PBS Only

Catalog Number: 17807-1-PBS



Basic Information

Catalog Number:

17807-1-PBS

Size:

100ug, Concentration: 1 mg/ml by Nanodrop;

Source:

Rabbit

Isotype:

IgG

Immunogen Catalog Number:

AG12087

GenBank Accession Number:

BC108314

GeneID (NCBI):

27230

UNIPROT ID:

Q9Y6X1

Full Name:

stress-associated endoplasmic reticulum protein 1

Calculated MW:

66 aa, 7 kDa

Observed MW:

10 kDa

Purification Method:

Antigen affinity purification

Applications

Tested Applications:

WB, IHC, IF/ICC, IP, Indirect ELISA

Species Specificity:

human, mouse, rat

Background Information

Stress-associated endoplasmic reticulum (ER) protein 1 (SERP1), also known as ribosome-associated membrane protein 4 (RAMP4), is a Sec61-associated polypeptide that is induced by ER stress [PMID:16705175]. SERP1 interacts with target proteins during their translocation into the lumen of the endoplasmic reticulum. It controls glycosylation of major histocompatibility complex class II-associated invariant chains by a translocational pausing mechanism, and its overexpression stabilizes newly synthesized membrane proteins under ER stress by associating with the Sec61 complex [PMID:10601334]. It is suggested SERP1 is involved in the biosynthesis/processing of secretory proteins

Storage

Storage:

Store at -80°C.

Storage Buffer:

PBS Only

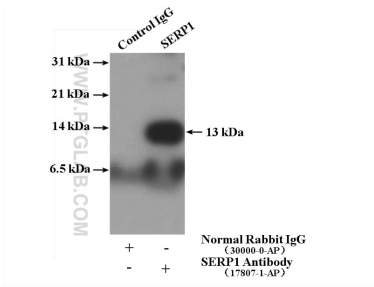
For technical support and original validation data for this product please contact:

T: 1 (888) 4PTGLAB (1-888-478-4522) (toll free in USA), or 1(312) 455-8498 (outside USA)

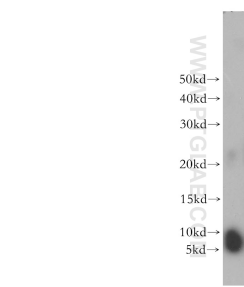
E: proteintech@ptglab.com
W: ptglab.com

This product is exclusively available under Proteintech Group brand and is not available to purchase from any other manufacturer.

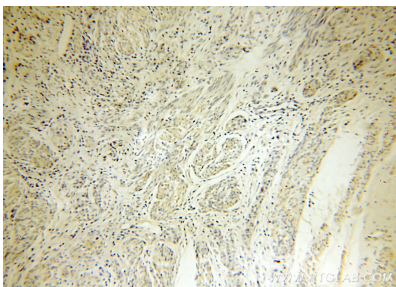
Selected Validation Data



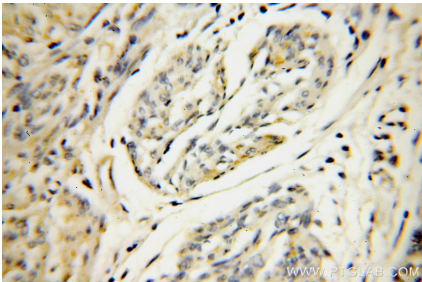
IP result of anti-SERP1 (IP:17807-1-AP, 4ug; Detection:17807-1-AP 1:500) with mouse brain tissue lysate 3160 ug. This data was developed using the same antibody clone with 17807-1-PBS in a different storage buffer formulation.



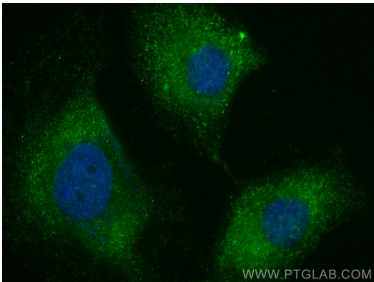
mouse brain tissue were subjected to SDS PAGE followed by western blot with 17807-1-AP (SERP1 antibody) at dilution of 1:500 incubated at room temperature for 1.5 hours. This data was developed using the same antibody clone with 17807-1-PBS in a different storage buffer formulation.



Immunohistochemical analysis of paraffin-embedded human endometrial cancer using 17807-1-AP (SERP1 antibody) at dilution of 1:100 (under 10x lens). This data was developed using the same antibody clone with 17807-1-PBS in a different storage buffer formulation.



Immunohistochemical analysis of paraffin-embedded human endometrial cancer using 17807-1-AP (SERP1 antibody) at dilution of 1:100 (under 40x lens). This data was developed using the same antibody clone with 17807-1-PBS in a different storage buffer formulation.



Immunofluorescent analysis of (-20°C Ethanol) fixed HeLa cells using SERP1 antibody (17807-1-AP) at dilution of 1:200 and CoraLite®488-Conjugated Goat Anti-Rabbit IgG(H+L) (SA00013-2). This data was developed using the same antibody clone with 17807-1-PBS in a different storage buffer formulation.