

For Research Use Only

SPRY1 Polyclonal antibody, PBS Only

Catalog Number:17813-1-PBS



Basic Information

Catalog Number: 17813-1-PBS	GenBank Accession Number: BC063856	Purification Method: Antigen affinity purification
Size: 100ug , Concentration: 1 mg/ml by Nanodrop;	GeneID (NCBI): 10252	
Source: Rabbit	UNIPROT ID: O43609	
Isotype: IgG	Full Name: sprouty homolog 1, antagonist of FGF signaling (Drosophila)	
Immunogen Catalog Number: AG12129	Calculated MW: 319 aa, 35 kDa	
	Observed MW: 35 kDa	

Applications

Tested Applications:
WB, IP, Indirect ELISA

Species Specificity:
human, mouse, rat

Background Information

Sprouty homolog 1 (SPRY1) belongs to the sprouty family. Spry-1 is a negative regulator of receptor tyrosine kinase signalling (PMID: 36543535). Spry1 and its related proteins have also been implicated as negative regulators of RhoA and its downstream effector Rho kinase through the non-canonical Wnt signaling (PMID: 19671746, PMID: 15184877). Sprouty-1 and Sprouty-2 proteins are expressed in early embryonic lung both in the epithelial cells of distal tubules and in peripheral mesenchymal cells (PMID: 22236546). Spry1 is a cytoplasmic protein that plays a critical role in kidney development and is primarily known to inhibit the Ras/MEK/ERK pathway (PMID: 21310958).

Storage

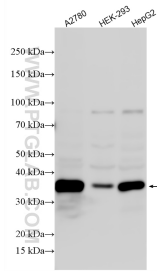
Storage:
Store at -80°C.

Storage Buffer:
PBS only, pH7.3

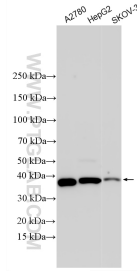
For technical support and original validation data for this product please contact:
T: 1 (888) 4PTGLAB (1-888-478-4522) (toll free in USA), or 1(312) 455-8498 (outside USA) E: proteintech@ptglab.com
W: ptglab.com

This product is exclusively available under Proteintech Group brand and is not available to purchase from any other manufacturer.

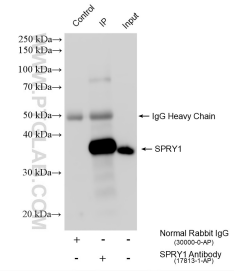
Selected Validation Data



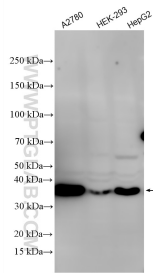
Various lysates were subjected to SDS PAGE followed by western blot with 17813-1-AP (SPRY1 antibody) at dilution of 1:3000 incubated at room temperature for 1.5 hours. This data was developed using the same antibody clone with 17813-1-PBS in a different storage buffer formulation.



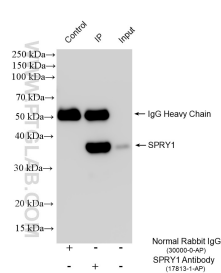
Various lysates were subjected to SDS PAGE followed by western blot with 17813-1-AP (SPRY1 antibody) at dilution of 1:4000 incubated at room temperature for 1.5 hours. This data was developed using the same antibody clone with 17813-1-PBS in a different storage buffer formulation.



IP result of anti-SPRY1 (IP:17813-1-AP, 4ug; Detection:17813-1-AP 1:3000) with A2780 cells lysate 1000 ug. This data was developed using the same antibody clone with 17813-1-PBS in a different storage buffer formulation.



Various lysates were subjected to SDS PAGE followed by western blot with 17813-1-AP (SPRY1 antibody) at dilution of 1:5000 incubated at room temperature for 1.5 hours. This data was developed using the same antibody clone with 17813-1-PBS in a different storage buffer formulation.



IP result of anti-SPRY1 (IP:17813-1-AP, 4ug; Detection:17813-1-AP 1:3000) with HT-29 cells lysate 1760 ug. This data was developed using the same antibody clone with 17813-1-PBS in a different storage buffer formulation.