

For Research Use Only

# LGALS13 Polyclonal antibody, PBS Only

Catalog Number: 17823-1-PBS



## Basic Information

**Catalog Number:**

17823-1-PBS

**Size:**

100ug, Concentration: 1 mg/ml by Nanodrop;

**Source:**

Rabbit

**Isotype:**

IgG

**Immunogen Catalog Number:**

AG12192

**GenBank Accession Number:**

BC066304

**GeneID (NCBI):**

29124

**UNIPROT ID:**

Q9UHV8

**Full Name:**

lectin, galactoside-binding, soluble, 13

**Calculated MW:**

139 aa, 16 kDa

**Observed MW:**

16 kDa

**Purification Method:**

Antigen affinity purification

## Applications

**Tested Applications:**

WB, IHC, Indirect ELISA

**Species Specificity:**

human

## Background Information

Galectins are glycan-binding proteins that regulate innate and adaptive immune responses, and some confer maternal-fetal immune tolerance in eutherian mammals. Three of the five human cluster galectins are solely expressed in the placenta, where they may confer additional immunoregulatory functions to enable deep placentation (PMID: 25191322). One of these is galactoside-binding soluble lectin 13 (LGALS13, also known as Galectin-13 and PP13), which has a high affinity for the sugar residues of glycoproteins. PP13 is implicated in placentation and is involved in inflammation and immune defense required for trophoblast invasion during uterine artery remodeling in early pregnancy (PMID: 19497882; 10527825; 21596368; 26018511).

## Storage

**Storage:**

Store at -80°C.

**Storage Buffer:**

PBS only, pH7.3

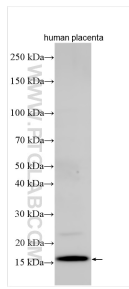
For technical support and original validation data for this product please contact:

T: 1 (888) 4PTGLAB (1-888-478-4522) (toll free in USA), or 1(312) 455-8498 (outside USA)

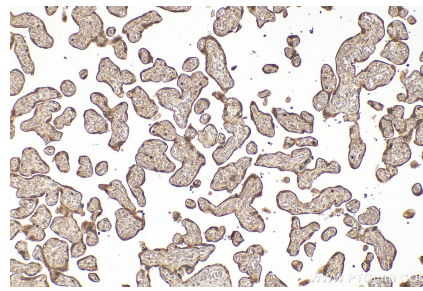
E: [proteintech@ptglab.com](mailto:proteintech@ptglab.com)  
W: [ptglab.com](http://ptglab.com)

**This product is exclusively available under Proteintech Group brand and is not available to purchase from any other manufacturer.**

## Selected Validation Data



Various lysates were subjected to SDS PAGE followed by western blot with 17823-1-AP (LGALS13 antibody) at dilution of 1:500 incubated at room temperature for 1.5 hours. This data was developed using the same antibody clone with 17823-1-PBS in a different storage buffer formulation.



Immunohistochemical analysis of paraffin-embedded human placenta tissue slide using 17823-1-AP (LGALS13 antibody) at dilution of 1:200 (under 10x lens). Heat mediated antigen retrieval with Tris-EDTA buffer (pH 9.0). This data was developed using the same antibody clone with 17823-1-PBS in a different storage buffer formulation.