

For Research Use Only

# RAB1B Polyclonal antibody, PBS Only

Catalog Number: 17824-1-PBS

Featured Product



## Basic Information

**Catalog Number:**

17824-1-PBS

**Size:**

100ug, Concentration: 1mg/ml by Nanodrop;

**Source:**

Rabbit

**Isotype:**

IgG

**Immunogen Catalog Number:**

AG12197

**GenBank Accession Number:**

BC071169

**GeneID (NCBI):**

81876

**UNIPROT ID:**

Q9H0U4

**Full Name:**

RAB1B, member RAS oncogene family

**Calculated MW:**

201 aa, 22 kDa

**Observed MW:**

22-25 kDa

**Purification Method:**

Antigen affinity purification

## Applications

**Tested Applications:**

WB, IHC, IF/ICC, ELISA

**Species Specificity:**

human, mouse

## Background Information

Ras-related protein Rab-1B (RAB1B) belongs to the small GTPase superfamily and Rab family. Rab1b, a GTPase regulating secretory transport, was recently associated with targeting proteins to LDs in a Drosophila RNAi screen. Rab1b recruits lipid-synthesizing enzymes, facilitating Lipid droplets (LDs) growth. The small GTPase Rab1b interacts with diacylglycerol acyltransferase 2 to facilitate its targeting to the surface of lipid droplets (PMID: 38809969). Rab1b, an extensively studied and established master regulator of ER-to-Golgi transport. The mechanism of Rab1b's function is to promote ER to LD surface targeting of those triglyceride-synthesizing enzymes that can associate with the unique lipid monolayer comprising the LD surface (PMID: 38809969). Rab1b is a regulatory protein involved in both COPI and COPII transport (PMID: 17429068). RAB1B may be cross-reactions with both RAB1A.

## Storage

**Storage:**

Store at -80°C.

**Storage Buffer:**

PBS only, pH7.3

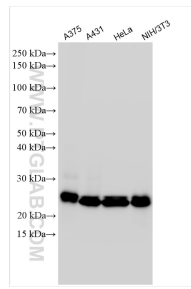
For technical support and original validation data for this product please contact:

T: 1 (888) 4PTGLAB (1-888-478-4522) (toll free in USA), or 1(312) 455-8498 (outside USA)

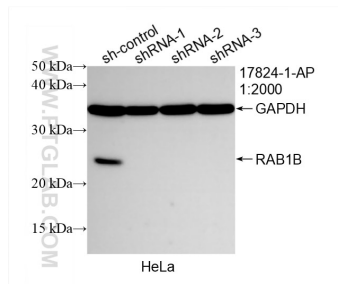
E: [proteintech@ptglab.com](mailto:proteintech@ptglab.com)  
W: [ptglab.com](http://ptglab.com)

**This product is exclusively available under Proteintech Group brand and is not available to purchase from any other manufacturer.**

## Selected Validation Data



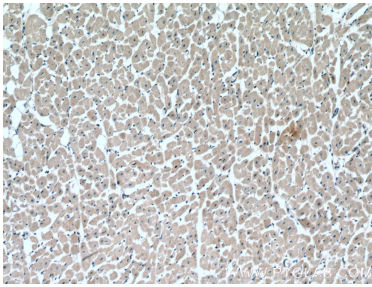
Various lysates were subjected to SDS PAGE followed by western blot with 17824-1-AP (RAB1B antibody) at dilution of 1:3000 incubated at room temperature for 1.5 hours. This data was developed using the same antibody clone with 17824-1-PBS in a different storage buffer formulation.



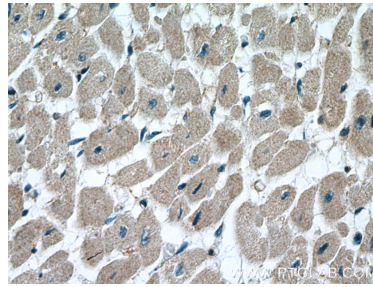
WB result of RAB1B antibody (17824-1-AP; 1:2000; incubated at room temperature for 1.5 hours) with sh-Control and sh-RAB1B transfected HeLa cells. This data was developed using the same antibody clone with 17824-1-PBS in a different storage buffer formulation.



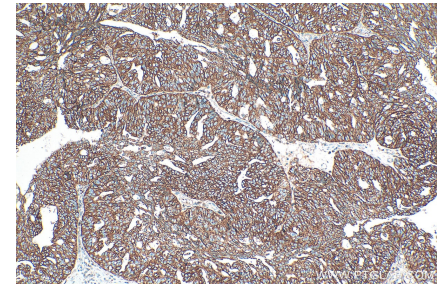
HeLa cells were subjected to SDS PAGE followed by western blot with 17824-1-AP (RAB1B antibody) at dilution of 1:600 incubated at room temperature for 1.5 hours.



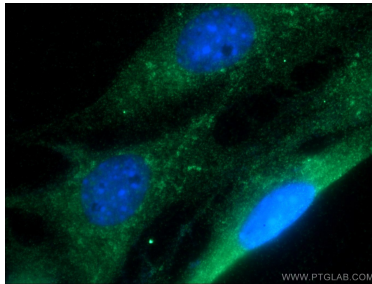
Immunohistochemical analysis of paraffin-embedded human heart tissue slide using 17824-1-AP (RAB1B Antibody) at dilution of 1:200 (under 10x lens). This data was developed using the same antibody clone with 17824-1-PBS in a different storage buffer formulation.



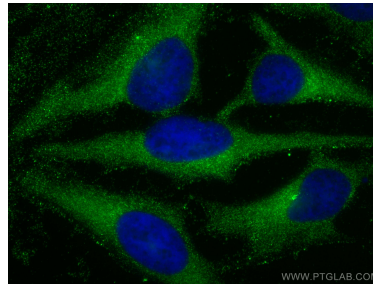
Immunohistochemical analysis of paraffin-embedded human heart tissue slide using 17824-1-AP (RAB1B Antibody) at dilution of 1:200 (under 40x lens). This data was developed using the same antibody clone with 17824-1-PBS in a different storage buffer formulation.



Immunohistochemical analysis of paraffin-embedded human ovary cancer tissue slide using 17824-1-AP (RAB1B antibody) at dilution of 1:400 (under 10x lens). Heat mediated antigen retrieval with Tris-EDTA buffer (pH 9.0). This data was developed using the same antibody clone with 17824-1-PBS in a different storage buffer formulation.



Immunofluorescent analysis of NIH/3T3 cells using 17824-1-AP (RAB1B antibody) at dilution of 1:50 and Alexa Fluor 488-conjugated AffiniPure Goat Anti-Rabbit IgG(H+L). This data was developed using the same antibody clone with 17824-1-PBS in a different storage buffer formulation.



Immunofluorescent analysis of (-20°C Methanol) fixed HeLa cells using RAB1B antibody (17824-1-AP) at dilution of 1:400 and CoraLite®488-Conjugated AffiniPure Goat Anti-Rabbit IgG(H+L). This data was developed using the same antibody clone with 17824-1-PBS in a different storage buffer formulation.