

For Research Use Only

# SLC35E2B Polyclonal antibody

Catalog Number: 17829-1-AP



## Basic Information

<b>Catalog Number:</b> 17829-1-AP	<b>GenBank Accession Number:</b> BC092507	<b>Purification Method:</b> Antigen affinity purification
<b>Size:</b> 150ul , Concentration: 700 µg/ml by Nanodrop;	<b>GeneID (NCBI):</b> 728661	<b>Recommended Dilutions:</b> WB 1:500-1:1000
<b>Source:</b> Rabbit	<b>Full Name:</b> similar to solute carrier family 35, member E2	
<b>Isotype:</b> IgG	<b>Calculated MW:</b> 236 aa, 43 kDa	
<b>Immunogen Catalog Number:</b> AG12211	<b>Observed MW:</b> 44 kDa	

## Applications

<b>Tested Applications:</b> WB, ELISA	<b>Positive Controls:</b> WB : Jurkat cells, mouse testis tissue
<b>Species Specificity:</b> human, mouse	

## Background Information

SLC35E2B, also known as SLC35E2, encodes solute carrier family 35 member E2B, functioning as a putative transporter. SLC35E2B is expressed in the heart, retina, skin, testis, and kidney (PMID:33711669).

## Storage

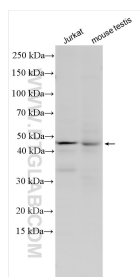
**Storage:**  
Store at -20°C. Stable for one year after shipment.  
**Storage Buffer:**  
PBS with 0.02% sodium azide and 50% glycerol pH 7.3.  
Aliquoting is unnecessary for -20°C storage

\*\*\* 20ul sizes contain 0.1% BSA

For technical support and original validation data for this product please contact:  
T: 1 (888) 4PTGLAB (1-888-478-4522) (toll free in USA), or 1(312) 455-8498 (outside USA)  
E: [proteintech@ptglab.com](mailto:proteintech@ptglab.com)  
W: [ptglab.com](http://ptglab.com)

This product is exclusively available under Proteintech Group brand and is not available to purchase from any other manufacturer.

## Selected Validation Data



Various lysates were subjected to SDS PAGE followed by western blot with 17829-1-AP (SLC35E2B antibody) at dilution of 1:800 incubated at room temperature for 1.5 hours.