

For Research Use Only

PFKFB2 Polyclonal antibody

Catalog Number: 17838-1-AP **5 Publications**



Basic Information

Catalog Number: 17838-1-AP	GenBank Accession Number: BC075076	Purification Method: Antigen affinity purification
Size: 150ul , Concentration: 133 µg/ml by Bradford method using BSA as the standard;	GeneID (NCBI): 5208	Recommended Dilutions: WB 1:500-1:1000 IHC 1:20-1:200
Source: Rabbit	Full Name: 6-phosphofructo-2-kinase/fructose-2,6-bisphosphatase 2	
Isotype: IgG	Calculated MW: 505 aa, 58 kDa	
Immunogen Catalog Number: AG12181	Observed MW: 58 kDa, 110 kDa	

Applications

Tested Applications:

IHC, WB, ELISA

Cited Applications:

WB

Species Specificity:

human, mouse, rat

Cited Species:

human, mouse

Note-IHC: suggested antigen retrieval with TE buffer pH 9.0; (*) Alternatively, antigen retrieval may be performed with citrate buffer pH 6.0

Positive Controls:

WB : human heart tissue, mouse brain tissue, rat brain tissue

IHC : human spleen tissue,

Background Information

PFKFB2(6-Phosphofructo-2-kinase/fructose 2,6-bisphosphatase 2) is also named as PFK-2/FBPase-2, which is a bifunctional enzyme responsible for the synthesis and breakdown of Fru-2,6-P2 in the regulation of glycolysis(PMID:10095107). In the C-terminal section, it belongs to the phosphoglycerate mutase family. The enzyme is a dimer of identical subunits, each composed of 505 amino acids and containing three discrete domains(PMID: 2552438). It has 2 isoforms produced by alternative splicing.

Notable Publications

Author	Pubmed ID	Journal	Application
Telang Sucheta S	22591674	J Transl Med	WB
Shu-Jie Zhao	29523788	Cell Death Dis	WB
Joshua K Salabei	27151219	J Biol Chem	WB

Storage

Storage:

Store at -20°C. Stable for one year after shipment.

Storage Buffer:

PBS with 0.02% sodium azide and 50% glycerol pH 7.3.

Aliquoting is unnecessary for -20°C storage

***** 20ul sizes contain 0.1% BSA**

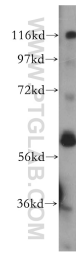
For technical support and original validation data for this product please contact:

T: 1 (888) 4PTGLAB (1-888-478-4522) (toll free in USA), or 1(312) 455-8498 (outside USA)

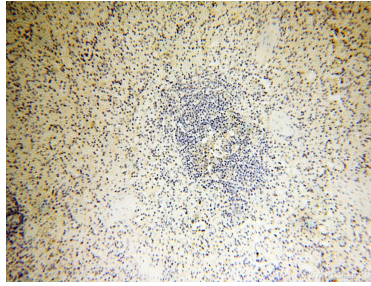
E: proteintech@ptglab.com
W: ptglab.com

This product is exclusively available under Proteintech Group brand and is not available to purchase from any other manufacturer.

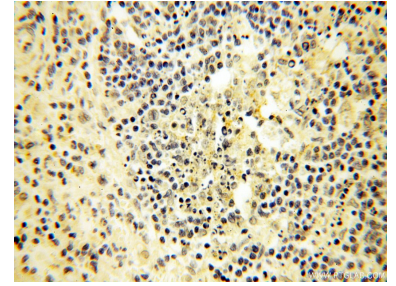
Selected Validation Data



human heart tissue were subjected to SDS PAGE followed by western blot with 17838-1-AP (PFKFB2 antibody) at dilution of 1:500 incubated at room temperature for 1.5 hours.



Immunohistochemical analysis of paraffin-embedded human spleen using 17838-1-AP (PFKFB2 antibody) at dilution of 1:100 (under 10x lens).



Immunohistochemical analysis of paraffin-embedded human spleen using 17838-1-AP (PFKFB2 antibody) at dilution of 1:100 (under 40x lens).