

For Research Use Only

# PFKFB2 Polyclonal antibody, PBS Only

Catalog Number:17838-1-PBS



## Basic Information

Catalog Number:

17838-1-PBS

Size:

100ug, Concentration: 1mg/ml by Nanodrop;

Source:

Rabbit

Isotype:

IgG

Immunogen Catalog Number:

AG12181

GenBank Accession Number:

BC075076

GeneID (NCBI):

5208

UNIPROT ID:

O60825

Full Name:

6-phosphofructo-2-kinase/fructose-2,6-biphosphatase 2

Calculated MW:

505 aa, 58 kDa

Observed MW:

55 kDa

Purification Method:

Antigen affinity purification

## Applications

Tested Applications:

WB, ELISA

Species Specificity:

human, mouse

## Background Information

PFKFB2(6-Phosphofructo-2-kinase/fructose 2,6-bisphosphatase 2) is also named as PFK-2/FBPase-2, which is a bifunctional enzyme responsible for the synthesis and breakdown of Fru-2,6-P<sub>2</sub> in the regulation of glycolysis(PMID:10095107). In the C-terminal section, it belongs to the phosphoglycerate mutase family. The enzyme is a dimer of identical subunits, each composed of 505 amino acids and containing three discrete domains(PMID: 2552438). It has 2 isoforms produced by alternative splicing.

## Storage

Storage:

Store at -80°C.

Storage Buffer:

PBS Only

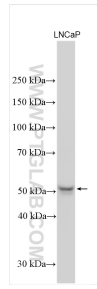
For technical support and original validation data for this product please contact:

T: 1 (888) 4PTGLAB (1-888-478-4522) (toll free in USA), or 1(312) 455-8498 (outside USA)

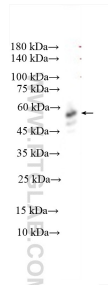
E: [proteintech@ptglab.com](mailto:proteintech@ptglab.com)  
W: [ptglab.com](http://ptglab.com)

**This product is exclusively available under Proteintech Group brand and is not available to purchase from any other manufacturer.**

## Selected Validation Data



Various lysates were subjected to SDS PAGE followed by western blot with 17838-1-AP (PFKFB2 antibody) at dilution of 1:3000 incubated at room temperature for 1.5 hours. This data was developed using the same antibody clone with 17838-1-PBS in a different storage buffer formulation.



mouse retina tissue were subjected to SDS PAGE followed by western blot with 17838-1-AP (PFKFB2 antibody) at dilution of 1:800 incubated at room temperature for 1.5 hours. This data was developed using the same antibody clone with 17838-1-PBS in a different storage buffer formulation.