

For Research Use Only

# SLC6A18 Polyclonal antibody

Catalog Number: 17876-1-AP



## Basic Information

<b>Catalog Number:</b> 17876-1-AP	<b>GenBank Accession Number:</b> BC056757	<b>Purification Method:</b> Antigen affinity purification
<b>Size:</b> 150ul , Concentration: 300 µg/ml by Nanodrop;	<b>GeneID (NCBI):</b> 348932	<b>Recommended Dilutions:</b> WB 1:500-1:2000
<b>Source:</b> Rabbit	<b>Full Name:</b> solute carrier family 6, member 18	
<b>Isotype:</b> IgG	<b>Calculated MW:</b> 628 aa, 71 kDa	
<b>Immunogen Catalog Number:</b> AG11685	<b>Observed MW:</b> ~70 kDa	

## Applications

<b>Tested Applications:</b> WB, ELISA	<b>Positive Controls:</b> WB : HepG2 cells, RAW 264.7 cells, mouse brain tissue, mouse kidney tissue
<b>Species Specificity:</b> human, mouse	

## Background Information

SLC6A18, also known as XTRP2 and BOAT3, belongs to the SLC6 family of proteins. SLC6A18 acts as specific transporters for neurotransmitters, amino acids and osmolytes such as betaine, taurine and creatine. SLC6A18 is highly expressed at the luminal membrane of kidney proximal tubules and displays 50% identity with SLC6A19 (BOAT1), which is the main neutral amino acid transporter in both kidney and small intestine (PMID: 19478081, PMID: 21420947).

## Storage

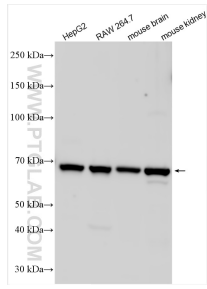
**Storage:**  
Store at -20°C. Stable for one year after shipment.  
**Storage Buffer:**  
PBS with 0.02% sodium azide and 50% glycerol pH 7.3.  
Aliquoting is unnecessary for -20°C storage

\*\*\* 20ul sizes contain 0.1% BSA

For technical support and original validation data for this product please contact:  
T: 1 (888) 4PTGLAB (1-888-478-4522) (toll free in USA), or 1(312) 455-8498 (outside USA)  
E: proteintech@ptglab.com  
W: ptglab.com

This product is exclusively available under Proteintech Group brand and is not available to purchase from any other manufacturer.

## Selected Validation Data



Various lysates were subjected to SDS PAGE followed by western blot with 17876-1-AP (SLC6A18 antibody) at dilution of 1:1000 incubated at room temperature for 1.5 hours.