

For Research Use Only

LMAN2L Polyclonal antibody

Catalog Number: 17877-1-AP

Featured Product



Basic Information

Catalog Number:

17877-1-AP

Size:

150ul, Concentration: 353 ug/ml by Bradford method using BSA as the standard;

Source:

Rabbit

Isotype:

IgG

Immunogen Catalog Number:

AG11737

GenBank Accession Number:

BC067265

GeneID (NCBI):

81562

UNIPROT ID:

Q9H0V9

Full Name:

lectin, mannose-binding 2-like

Calculated MW:

348 aa, 40 kDa

Observed MW:

40 kDa

Purification Method:

Antigen affinity purification

Recommended Dilutions:

WB 1:200-1:1000

IHC 1:50-1:500

Applications

Tested Applications:

WB, IHC, ELISA

Species Specificity:

human, mouse

Note-IHC: suggested antigen retrieval with *TE buffer pH 9.0*; (*) Alternatively, antigen retrieval may be performed with *citrate buffer pH 6.0*

Positive Controls:

WB : N2a cells,

IHC : human kidney tissue,

Storage

Storage:

Store at -20°C. Stable for one year after shipment.

Storage Buffer:

PBS with 0.02% sodium azide and 50% glycerol pH 7.3.

Aliquoting is unnecessary for -20°C storage

*** 20ul sizes contain 0.1% BSA

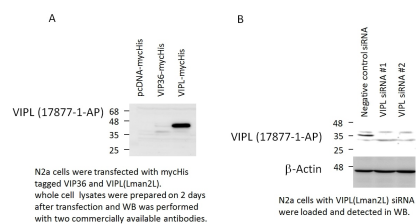
For technical support and original validation data for this product please contact:

T: 1 (888) 4PTGLAB (1-888-478-4522) (toll free in USA), or 1(312) 455-8498 (outside USA)

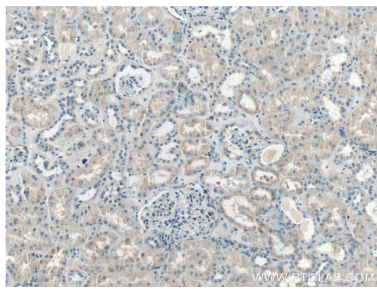
E: proteintech@ptglab.com
W: ptglab.com

This product is exclusively available under Proteintech Group brand and is not available to purchase from any other manufacturer.

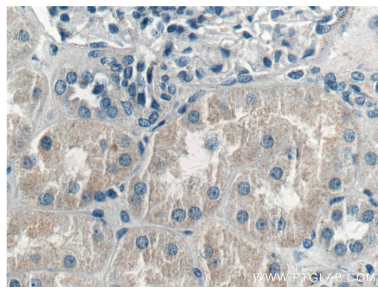
Selected Validation Data



WB result of VIPL/LMAN2L antibody (17877-1-AP) detected with N2a cells transfected with plasmid and siRNA-VIPL.(Data from Dr. Keiji Uchiyama, Tokushima University).



Immunohistochemical analysis of paraffin-embedded human kidney tissue slide using 17877-1-AP (LMAN2L Antibody) at dilution of 1:200 (under 10x lens).



Immunohistochemical analysis of paraffin-embedded human kidney tissue slide using 17877-1-AP (LMAN2L Antibody) at dilution of 1:200 (under 40x lens).