

For Research Use Only

MPV17L Polyclonal antibody

Catalog Number: 17884-1-AP

1 Publications



Basic Information

Catalog Number:

17884-1-AP

Size:

150ul, Concentration: 240 ug/ml by Nanodrop and 160 ug/ml by Bradford method using BSA as the standard;

Source:

Rabbit

Isotype:

IgG

Immunogen Catalog Number:

AG11935

GenBank Accession Number:

BC061514

GeneID (NCBI):

255027

UNIPROT ID:

Q2QL34

Full Name:

MPV17 mitochondrial membrane protein-like

Calculated MW:

147 aa, 17 kDa

Observed MW:

10 kDa

Purification Method:

Antigen affinity purification

Recommended Dilutions:

WB 1:500-1:2000

Applications

Tested Applications:

WB, ELISA

Cited Applications:

WB

Species Specificity:

human, mouse

Cited Species:

mouse

Positive Controls:

WB: mouse kidney tissue, HEK-293 cells

Background Information

MpV17 mitochondrial membrane protein-like protein (MPV17L) is a protein with high sequence homology with MPV17. MPV17L was initially identified as a peroxisomal membrane protein which is involved in the development of early-onset of glomerulosclerosis. But now its localization is still controversial. Human MPV17L has two variants ubiquitously expressed in human tissues, but with different cellular localizations, and plays roles in regulating expression of antioxidant enzymes. Catlog#17884-1-AP is a rabbit polyclonal antibody raised against the full-length of human MPV17L.

Notable Publications

Author	Pubmed ID	Journal	Application
Cong Han	33383113	J Ethnopharmacol	WB

Storage

Storage:

Store at -20°C. Stable for one year after shipment.

Storage Buffer:

PBS with 0.02% sodium azide and 50% glycerol pH 7.3.

Aliquoting is unnecessary for -20°C storage

*** 20ul sizes contain 0.1% BSA

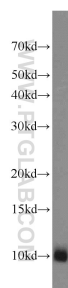
For technical support and original validation data for this product please contact:

T: 1 (888) 4PTGLAB (1-888-478-4522) (toll free in USA), or 1(312) 455-8498 (outside USA)

E: proteintech@ptglab.com
W: ptglab.com

This product is exclusively available under Proteintech Group brand and is not available to purchase from any other manufacturer.

Selected Validation Data



mouse kidney tissue were subjected to SDS PAGE followed by western blot with 17884-1-AP (MPV17L antibody) at dilution of 1:1000 incubated at room temperature for 1.5 hours.