

For Research Use Only

BHLHE40 Polyclonal antibody

Catalog Number: 17895-1-AP

Featured Product

11 Publications



Basic Information

Catalog Number:

17895-1-AP

Size:

150ul, Concentration: 750 µg/ml by Nanodrop and 347 µg/ml by Bradford method using BSA as the standard;

Source:

Rabbit

Isotype:

IgG

Immunogen Catalog Number:

AG12236

GenBank Accession Number:

BC082238

GeneID (NCBI):

8553

UNIPROT ID:

O14503

Full Name:

basic helix-loop-helix family, member e40

Calculated MW:

412 aa, 46 kDa

Observed MW:

46-50 kDa

Purification Method:

Antigen affinity purification

Recommended Dilutions:

WB 1:1000-1:4000

IP 0.5-4.0 µg for 1.0-3.0 mg of total protein lysate

IHC 1:50-1:500

Applications

Tested Applications:

WB, IP, IHC, ELISA

Cited Applications:

WB, IP, IF, IHC

Species Specificity:

human, mouse, rat

Cited Species:

human, rat, mouse

Positive Controls:

WB: C2C12 cells, HeLa cells, MDA-MB-231 cells

IP: HeLa cells,

IHC: human endometrial cancer tissue, human pancreas cancer tissue, mouse stomach tissue

Note-IHC: suggested antigen retrieval with TE buffer pH 9.0; (*) Alternatively, antigen retrieval may be performed with citrate buffer pH 6.0

Background Information

BHLHE40 (Basic Helix-Loop-Helix Family Member E40), also known as BHLHB2, STRA13, DEC1, or SHARP2, is a member of the basic helix-loop-helix (bHLH) protein family, a large superfamily of transcriptional regulators expressed in many organisms. BHLHE40 is known to regulate a wide variety of essential cellular processes, including cell cycle, cellular proliferation, programmed cell death, cellular development and differentiation, as well as circadian rhythms (PMID: 34551158). It is reported that BHLHE40 is overexpressed in gastric, breast, and brain tumors; and downregulated in colorectal, esophageal, pancreatic and lung cancer (PMID: 32577154).

Notable Publications

Author	Pubmed ID	Journal	Application
Kai-Wen Ren	36304536	Front Cardiovasc Med	WB,IHC
Shuang Li	36194366	J Physiol Biochem	IP,WB,IF
Dan-Dan Feng	34917665	Front Cardiovasc Med	WB,IF

Storage

Storage:

Store at -20°C. Stable for one year after shipment.

Storage Buffer:

PBS with 0.02% sodium azide and 50% glycerol pH 7.3.

Aliquoting is unnecessary for -20°C storage

*** 20ul sizes contain 0.1% BSA

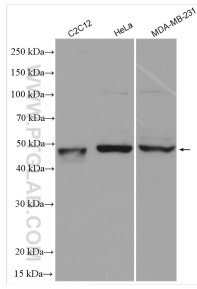
For technical support and original validation data for this product please contact:

T: 1 (888) 4PTGLAB (1-888-478-4522) (toll free in USA), or 1(312) 455-8498 (outside USA)

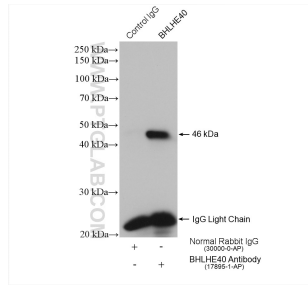
E: proteintech@ptglab.com
W: ptglab.com

This product is exclusively available under Proteintech Group brand and is not available to purchase from any other manufacturer.

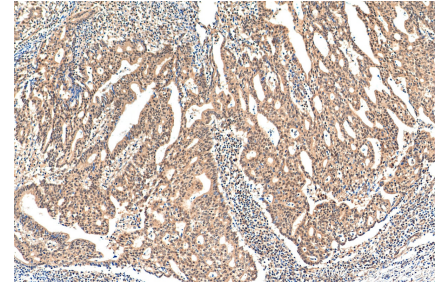
Selected Validation Data



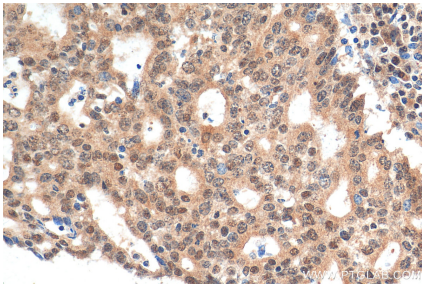
Various lysates were subjected to SDS PAGE followed by western blot with 17895-1-AP (BHLHE40 antibody) at dilution of 1:2000 incubated at room temperature for 1.5 hours.



IP result of anti-BHLHE40 (IP:17895-1-AP, 4ug; Detection:17895-1-AP 1:1000) with HeLa cells lysate 1800 ug.



Immunohistochemical analysis of paraffin-embedded human endometrial cancer tissue slide using 17895-1-AP (BHLHE40 antibody) at dilution of 1:200 (under 10x lens). Heat mediated antigen retrieval with Tris-EDTA buffer (pH 9.0).



Immunohistochemical analysis of paraffin-embedded human endometrial cancer tissue slide using 17895-1-AP (BHLHE40 antibody) at dilution of 1:200 (under 40x lens). Heat mediated antigen retrieval with Tris-EDTA buffer (pH 9.0).