

For Research Use Only

RALY Polyclonal antibody, PBS Only

Catalog Number: 17896-1-PBS

Featured Product



Basic Information

Catalog Number:

17896-1-PBS

Size:

100ug, Concentration: 1 mg/ml by Nanodrop;

Source:

Rabbit

Isotype:

IgG

Immunogen Catalog Number:

AG12250

GenBank Accession Number:

BC103753

GeneID (NCBI):

22913

UNIPROT ID:

Q9UKM9

Full Name:

RNA binding protein, autoantigenic (hnRNP-associated with lethal yellow homolog (mouse))

Calculated MW:

307 aa, 33 kDa

Observed MW:

34-36 kDa

Purification Method:

Antigen affinity purification

Applications

Tested Applications:

WB, IP, Indirect ELISA

Species Specificity:

human

Storage

Storage:

Store at -80°C.

Storage Buffer:

PBS only, pH7.3

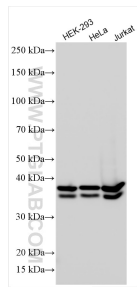
For technical support and original validation data for this product please contact:

T: 1 (888) 4PTGLAB (1-888-478-4522) (toll free in USA), or 1(312) 455-8498 (outside USA)

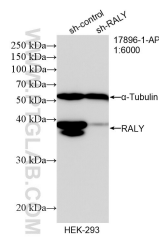
E: proteintech@ptglab.com
W: ptglab.com

This product is exclusively available under Proteintech Group brand and is not available to purchase from any other manufacturer.

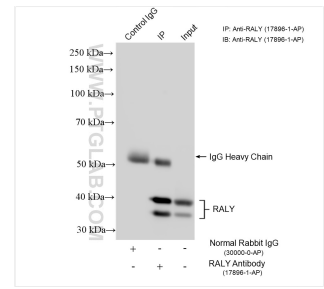
Selected Validation Data



Various lysates were subjected to SDS PAGE followed by western blot with 17896-1-AP (RALY antibody) at dilution of 1:3000 incubated at room temperature for 1.5 hours. This data was developed using the same antibody clone with 17896-1-PBS in a different storage buffer formulation.



WB result of RALY antibody (17896-1-AP; 1:6000; incubated at room temperature for 1.5 hours) with sh-Control and sh-RALY transfected HEK-293 cells. This data was developed using the same antibody clone with 17896-1-PBS in a different storage buffer formulation.



IP result of anti-RALY (IP:17896-1-AP, 4ug; Detection:17896-1-AP 1:8000) with HEK-293T cells lysate 2200 ug. This data was developed using the same antibody clone with 17896-1-PBS in a different storage buffer formulation.