

For Research Use Only

ADAMDEC1 Polyclonal antibody

Catalog Number: 17899-1-AP

Featured Product

7 Publications



Basic Information

Catalog Number:

17899-1-AP

Size:

150ul, Concentration: 650 ug/ml by Nanodrop;

Source:

Rabbit

Isotype:

IgG

Immunogen Catalog Number:

AG12265

GenBank Accession Number:

BC074877

GeneID (NCBI):

27299

UNIPROT ID:

O15204

Full Name:

ADAM-like, decysin 1

Calculated MW:

470 aa, 53 kDa

Observed MW:

44 kDa

Purification Method:

Antigen affinity purification

Recommended Dilutions:

WB 1:200-1:1000

IHC 1:20-1:200

IF/ICC 1:50-1:500

Applications

Tested Applications:

WB, IHC, IF/ICC, ELISA

Cited Applications:

WB, IHC, IF

Species Specificity:

human

Cited Species:

human, mouse

Positive Controls:

WB : MCF-7 cells,

IHC : human tonsillitis tissue, human lymphoma tissue

IF/ICC : MCF-7 cells,

Note-IHC: suggested antigen retrieval with TE buffer pH 9.0; (*) Alternatively, antigen retrieval may be performed with citrate buffer pH 6.0

Background Information

Metalloendopeptidase ADAM-Like Decysin 1 (ADAMDEC1) was first identified as a unique member of the matrix metalloprotease (ADAM) family. ADAMs are increasingly recognized as playing an important role in gut homeostasis and bowel inflammation. ADAMDEC1 is abundantly, and almost exclusively, expressed in the gastrointestinal (GI) tract.

Notable Publications

Author	Pubmed ID	Journal	Application
Weiliang Zhu	35178875	Thorac Cancer	WB,IHC
Cong Zhang	39680087	Arch Toxicol	IHC
Paolo Cadinu	38569542	Cell	IF

Storage

Storage:

Store at -20°C. Stable for one year after shipment.

Storage Buffer:

PBS with 0.02% sodium azide and 50% glycerol pH 7.3.

Aliquoting is unnecessary for -20°C storage

*** 20ul sizes contain 0.1% BSA

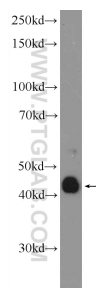
For technical support and original validation data for this product please contact:

T: 1 (888) 4PTGLAB (1-888-478-4522) (toll free in USA), or 1(312) 455-8498 (outside USA)

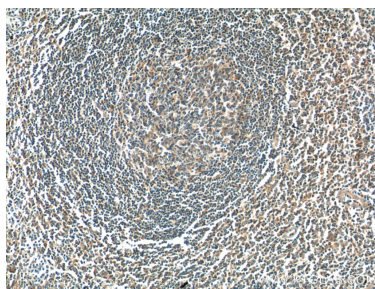
E: proteintech@ptglab.com
W: ptglab.com

This product is exclusively available under Proteintech Group brand and is not available to purchase from any other manufacturer.

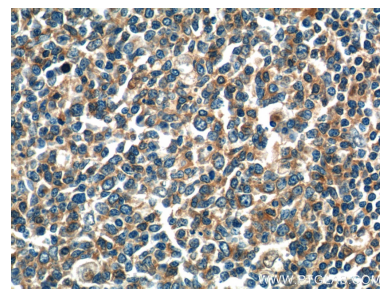
Selected Validation Data



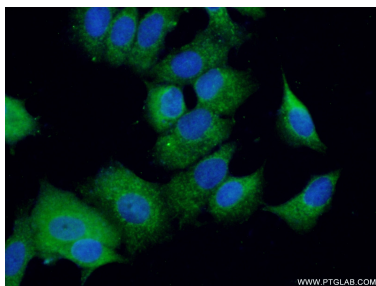
MCF-7 cells were subjected to SDS PAGE followed by western blot with 17899-1-AP (ADAMDEC1 Antibody) at dilution of 1:300 incubated at room temperature for 1.5 hours.



Immunohistochemical analysis of paraffin-embedded human tonsillitis tissue slide using 17899-1-AP (ADAMDEC1 Antibody) at dilution of 1:50 (under 10x lens).



Immunohistochemical analysis of paraffin-embedded human tonsillitis tissue slide using 17899-1-AP (ADAMDEC1 Antibody) at dilution of 1:50 (under 40x lens).



Immunofluorescent analysis of (-20°C Ethanol) fixed MCF-7 cells using 17899-1-AP (ADAMDEC1 antibody) at dilution of 1:50 and Alexa Fluor 488-conjugated AffiniPure Goat Anti-Rabbit IgG(H+L).